



Test Report

No.: SHHG1412047293FT-01

Date: JAN. 23, 2015

Page: 1 of 49

LUMI LEGEND CORPORATION

22/F., BUILDING 1, LISI PLAZA, HUIFENG EAST ROAD, NINGBO, CHINA 315100

THE TEST REPORT IS TO SUPERSEDE THE TEST REPORT No.: SHHG1412047293FT
DATE: JAN. 20, 2015

The following sample(s) was/were submitted and identified by the client as:

Sample Description : ERGONOMIC HEIGHT ADJUSTABLE CHILDREN DESK
& CHAIR SET

Style/ Item No. : C301

Manufacturer : LUMI LEGEND CORPORATION

Supplier : LUMI LEGEND CORPORATION

Country of Origin : CHINA

Sample Receiving Date : DEC. 24, 2014

Testing Period : DEC. 24, 2014 TO JAN. 20, 2015

Test Performed : SELECTED TEST(S) AS REQUESTED BY APPLICANT

Test Requested : FOR FURTHER DETAILS, PLEASE REFER TO THE
FOLLOWING PAGE(S)

Test Result(s) : FOR FURTHER DETAILS, PLEASE REFER TO THE
FOLLOWING PAGE(S)

Conclusion : THE SUBMITTED SAMPLE MET THE TEST
REQUIREMENT.

Signed for and on behalf of
SGS-CSTC Standards Technical Services (Shanghai) Co., Ltd.

Vincent Feng
Technical Manager

This document is issued by the Company subject to its General Conditions of Service printed overleaf, available on request or accessible at http://www.sgs.com/terms_and_conditions.htm and, for electronic format documents, subject to Terms and Conditions for Electronic Documents at www.sgs.com/terms_e-document.htm. Attention is drawn to the limitation of liability, indemnification and jurisdiction issues defined therein. Any holder of this document is advised that information contained hereon reflects the Company's findings at the time of its intervention only and within the limits of Client's instructions, if any. The Company's sole responsibility is to its Client and this document does not exonerate parties to a transaction from exercising all their rights and obligations under the transaction documents. This document cannot be reproduced except in full, without prior written approval of the Company. Any unauthorized alteration, forgery or falsification of the content or appearance of this document is unlawful and offenders may be prosecuted to the fullest extent of the law. Unless otherwise stated the results shown in this test report refer only to the sample(s) tested and such sample(s) are retained for 30 days only.



SGS-CSTC Standards Technical Services Co., Ltd.
Shanghai Branch

3rd Building, No. 889, Yishan Road, Xuhui District Shanghai, China 200233
中国·上海·徐汇区宜山路889号3号楼

t (86-21)61402666*2013
t (86-21)61402666*2013

f (86-21)54500353
f (86-21)54500353
e sgs.china@sgs.com



Test Report

No.: SHHG1412047293FT-01

Date: JAN. 23, 2015

Page: 2 of 49

Test Conducted:

For chair:

Test Property	Test Method	Requirements	Internal Use
PHYSICAL CHARACTERISTICS			
Material	Standard Measurement	Legs/Base <u>Plastic</u> Backrest frame <u>Plastic</u> Seat frame <u>Plastic</u> Seat <u>Plastic</u> Armrest <u>Without</u> Fasteners <u>Metal</u> Filling material <u>Without</u>	/ Record only
Material Hardness	Standard Measurement	Seat <u>81 Shore D</u> Backrest <u>79 Shore D</u> Legs <u>70 Shore D</u> Tubular Components(metal) <u><20HRC (156.3HV)</u>	/ Record only
Dimensions	Standard Measurement	Overall: Height <u>25.5-31.0in</u> Width <u>15.0in</u> Depth <u>20.5in</u> Seat: Height(max 15-in) <u>12.0-17.3in</u> Width/Dia. <u>14.3in</u> Depth <u>13.5in</u> Thickness <u>1.5in</u> Metal frame Diameter <u>1.0 in</u> Metal tubing Thickness <u>0.067in</u> Plastic frame Thickness <u>/ in</u> Seat cushion Thickness <u>/ in</u> Back cushion Thickness <u>/ in</u> Leg Length <u>10.8-15.5in</u> Width/Diameter <u>2.0in</u> Depth <u>0.8in</u> Wall thickness <u>/ in</u> Floor space Front width <u>/ in</u> Back width <u>/ in</u> Depth <u>/ in</u> Overall weight <u>10.9lb</u> Wal-Mart USA Department 71 products meet the requirement of 17-58 weight supplement worksheet	/ Record only
CONSTRUCTION QUALITIES			
Finish/Workmanship	Visual Check	Good overall appearance with good alignment of components Wood is well sanded and free from splinters Free of nicks, burrs, pits, cracks and any	Pass

This document is issued by the Company subject to its General Conditions of Service printed overleaf, available on request or accessible at http://www.sgs.com/terms_and_conditions.htm and for electronic format documents, subject to Terms and Conditions for Electronic Documents at www.sgs.com/terms_e-document.htm. Attention is drawn to the limitation of liability, indemnification and jurisdiction issues defined therein. Any holder of this document is advised that information contained hereon reflects the Company's findings at the time of its intervention only and within the limits of Client's instructions, if any. The Company's sole responsibility is to its Client and this document does not exonerate parties to a transaction from exercising all their rights and obligations under the transaction documents. This document cannot be reproduced except in full, without prior written approval of the Company. Any unauthorized alteration, forgery or falsification of the content or appearance of this document is unlawful and offenders may be prosecuted to the fullest extent of the law. Unless otherwise stated the results shown in this test report refer only to the sample(s) tested and such sample(s) are retained for 30 days only.



3rd Building, No. 889, Yishan Road, Xuhui District Shanghai, China 200233

t (86-21)61402666*2013 f (86-21)54500353

www.cn.sgs.com e sgs.china@sgs.com

中国·上海·徐汇区宜山路889号3号楼 邮编:200233

t (86-21)61402666*2013 f (86-21)54500353



Test Report

No.: SHHG1412047293FT-01

Date: JAN. 23, 2015

Page: 3 of 49

Test Property	Test Method	Requirements	Internal Use
		other defects which may affect serviceability or appearance of the finished product	
Construction	Visual Check	Filling material visually matches filling material listed on law tag	Not applicable
	Standard measurement	Wood moisture content (12% or less) _____% Note: For WM USA products sold in Dept. 14 or Dept 74, 6%minimum to 12% maximum.	Not applicable
	Actual Use	Easily folds and unfolds without binding of the folding mechanism	Not applicable
	Actual Use	Moveable or adjustable components that are accessible to the occupant and which rotate or slide around a common axis do not exhibit a scissoring, shearing, or pinching hazard by not admitting a 0.210-in (5.3mm) to 0.375-in (9.5mm), diameter probe at any accessible point through the range of motion of such parts	Not applicable
	Actual Use	Circular holes in any rigid material less than 0.062in (1.58mm) thick which admits a 1/4-in (6mm) diameter rod to a depth of 3/8-in (10mm) or greater also admits a 1/2-in (13mm) diameter rod	Pass
	Actual Use	All accessible threaded ends of bolts, are protected by a suitable device (i.e. acorn nut)	
	Actual Use	Each leg provides replaceable or permanent shoe or other means to prevent marring or scratching of the floor surfaces (if applicable)	
	Actual Use	Product rests on flat surface with no excessive rocking or wobbling	
	Actual Use	Accessible gap at the hinge line between a stationary portion and movable portion that admits a 3/16-in (5mm) rod, also admits a 1/2-in	

This document is issued by the Company subject to its General Conditions of Service printed overleaf, available on request or accessible at http://www.sgs.com/terms_and_conditions.htm and for electronic format documents, subject to Terms and Conditions for Electronic Documents at www.sgs.com/terms_e-document.htm. Attention is drawn to the limitation of liability, indemnification and jurisdiction issues defined therein. Any holder of this document is advised that information contained hereon reflects the Company's findings at the time of its intervention only and within the limits of Client's instructions, if any. The Company's sole responsibility is to its Client and this document does not exonerate parties to a transaction from exercising all their rights and obligations under the transaction documents. This document cannot be reproduced except in full, without prior written approval of the Company. Any unauthorized alteration, forgery or falsification of the content or appearance of this document is unlawful and offenders may be prosecuted to the fullest extent of the law. Unless otherwise stated the results shown in this test report refer only to the sample(s) tested and such sample(s) are retained for 30 days only.



SGS-CSTC Standards Technical Services Co., Ltd.
Shanghai Branch

3rd Building, No. 889, Yishan Road, Xuhui District Shanghai, China 200233
中国·上海·徐汇区宜山路889号3号楼

t (86-21)61402666*2013
t (86-21)61402666*2013

f (86-21)54500353
f (86-21)54500353
www.cn.sgs.com
e sgs.china@sgs.com

Test Report

No.: SHHG1412047293FT-01

Date: JAN. 23, 2015

Page: 4 of 49

Test Property	Test Method	Requirements	Internal Use
		(13mm) rod	
	Actual Use	If product demonstrates potential for folding or other movement, (not including foot rest and reclining back movement), with an occupant in the chair and in the recommended use position, then it must meet one of the following requirements	
	Actual Use	Product has a locking/latching device or other means to prevent unexpected or sudden movement, or collapse of the product N Y/N Or Adequate clearance to provide protection from crushing or laceration of fingers or toes N Y/N	
Requirement for product equipped with a locking /latching device	Actual Use	Locking/Latching devices or other means to prevent unexpected or sudden movement, or collapse of the product, engage automatically when the product is placed in the manufacturer's recommended use position Single action locking/latching devices demonstrate a minimum force of 10 lb to activate the release mechanism Double action locking/latching devices demonstrate 2 consecutive actions, the first must be maintained while the second is carried out, or 2 separate single action mechanisms activated simultaneously to fully release Product does not give the appearance of being in any	Not applicable

This document is issued by the Company subject to its General Conditions of Service printed overleaf, available on request or accessible at http://www.sgs.com/terms_and_conditions.htm and for electronic format documents, subject to Terms and Conditions for Electronic Documents at www.sgs.com/terms_e-document.htm. Attention is drawn to the limitation of liability, indemnification and jurisdiction issues defined therein. Any holder of this document is advised that information contained hereon reflects the Company's findings at the time of its intervention only and within the limits of Client's instructions, if any. The Company's sole responsibility is to its Client and this document does not exonerate parties to a transaction from exercising all their rights and obligations under the transaction documents. This document cannot be reproduced except in full, without prior written approval of the Company. Any unauthorized alteration, forgery or falsification of the content or appearance of this document is unlawful and offenders may be prosecuted to the fullest extent of the law. Unless otherwise stated the results shown in this test report refer only to the sample(s) tested and such sample(s) are retained for 30 days only.



SGS-CSTC Standards Technical Services Co., Ltd.
Shanghai Branch Laboratory

3rd Building, No. 889, Yishan Road, Xuhui District Shanghai, China 200233
中国·上海·徐汇区宜山路889号3号楼

t (86-21)61402666*2013 f (86-21)54500353
t (86-21)61402666*2013 f (86-21)54500353

www.cn.sgs.com
e sgs.china@sgs.com

Test Property	Test Method	Requirements	Internal Use
		manufacturer's recommended use position unless the locking/latching device is fully engaged(if provided)	
PERFORMANCE TESTING (Performance testing is the method of test and requirements used to ensure the product meets a minimum performance standard)			
Practical use	Actual Use	Withstands 250 folding/latching/locking cycles with no evidence of mechanical malfunction or loss of serviceability	Pass
Protective components	Actual Use	Any component which could be grasped between the child's thumb and forefinger, or teeth , or any component which has as least a 0.040-in gap between it and the adjacent component, withstands the following torque and tension tests, without creating small parts, sharp edges or points , or an entrapment hazard. Note: Torque is applied before tension on each test.	Pass
		Torque Each component withstands a torque of 3 lbf-in (0.5-Nm) maintained for 10-sec. Force is applied within a period of 5-ec, or until a rotation of 180° from the original position has been attained.	Pass
		Tension Each component withstands a 15-lbf (67 N) force gradually applied in the direction normally associated with removal of the component over a period of 5-sec and maintained for 10-sec	Pass
Upholstery performance	Actual Use	Fabric seams exhibit a seam strength in excess of 50 lb	Not applicable
Stability	ASTM F2613	The chair when tested as described in ASTM F2613 Section 6.8 shall not tip over backward.	Pass
Stability	Adapted from ANSI/BIFMA X5.1)	The chair is loaded with a 60-lb load simulating an occupant and the rear legs are secured to prevent sliding. The chair does not tip over when a 15-lb rearward force is applied to the center of the backrest (for chairs with backs only, not applicable to stools)	Pass
Strength testing			
Arm Strength - Horizontal Load Test	Adapted from ANSI/BIFMA X5.1	The chair is secured in a vertical upright position in a manner such to restrain the	Not applicable

This document is issued by the Company subject to its General Conditions of Service printed overleaf, available on request or accessible at http://www.sgs.com/terms_and_conditions.htm and for electronic format documents, subject to Terms and Conditions for Electronic Documents at www.sgs.com/terms_e-document.htm. Attention is drawn to the limitation of liability, indemnification and jurisdiction issues defined therein. Any holder of this document is advised that information contained hereon reflects the Company's findings at the time of its intervention only and within the limits of Client's instructions, if any. The Company's sole responsibility is to its Client and this document does not exonerate parties to a transaction from exercising all their rights and obligations under the transaction documents. This document cannot be reproduced except in full, without prior written approval of the Company. Any unauthorized alteration, forgery or falsification of the content or appearance of this document is unlawful and offenders may be prosecuted to the fullest extent of the law. Unless otherwise stated the results shown in this test report refer only to the sample(s) tested and such sample(s) are retained for 30 days only.



Test Report

No.: SHHG1412047293FT-01

Date: JAN. 23, 2015

Page: 6 of 49

Test Property	Test Method	Requirements	Internal Use
		seat frame, but not the arms from the movement. Both arms withstand a load of 20-lb applied outwardly on each arm at the most forward section of armrest for 1-min with no structural damage or loss of serviceability and with permanent deflection no greater than 1/2-in	
Arm Strength – Vertical Load Test	Adapted from ANSI/BIFMA X5.1	The chair is secured in a vertical upright position in a manner such to restrain the base, but not the arms from the arm withstands a vertical load of uniformly over a 5-in length along length of the arm, at the apparent position for 1-min with no evident damage or loss in serviceability	Not applicable
Leg Strength - Front Load Test	Adapted from ANSI/BIFMA X5.1	The chair is placed on its back in such a way that the top of the chair is not touching the floor and both rear legs are secured. Both front legs withstand a load of 30-lb applied inward to each leg at a point 1-in from the bottom of the leg for 1- min with no evidence of permanent deformation or loss in serviceability, including stacking ability if applicable (foldable legs are excluded)	Pass
Leg Strength - Side Load Test	Adapted from ANSI/BIFMA X5.1	The chair is placed on its side and secured on the lower part of the front and rear legs. Both front and rear legs withstand a load of 30-lb applied inward to each leg at a point 1-in from the bottom of the leg for 1-min with no evidence of permanent deformation or loss in serviceability, including stacking ability (if applicable)	Pass
Leg Strength – Rear leg test	Adapted from ANSI/BIFMA X5.1	The front legs of the chair are placed on wood blocks 2.25-in high (3.00-in high if leg stance is over 11-in) with the rear legs unrestricted. The chair withstands a 120-lb load applied onto the seat directly over the rear legs and the centerline of the seat for 1-min with no evidence cracks, structural damage, or loss in serviceability.	Pass
Backrest Strength Test	Adapted from ANSI/BIFMA X5.1	The chair is secured in an upright position in a manner such as to restrain movement of base. All adjustments (as applicable) are set at normal use conditions. The chair withstands a force	Pass

This document is issued by the Company subject to its General Conditions of Service printed overleaf, available on request or accessible at http://www.sgs.com/terms_and_conditions.htm and for electronic format documents, subject to Terms and Conditions for Electronic Documents at www.sgs.com/terms_e-document.htm. Attention is drawn to the limitation of liability, indemnification and jurisdiction issues defined therein. Any holder of this document is advised that information contained hereon reflects the Company's findings at the time of its intervention only and within the limits of Client's instructions, if any. The Company's sole responsibility is to its Client and this document does not exonerate parties to a transaction from exercising all their rights and obligations under the transaction documents. This document cannot be reproduced except in full, without prior written approval of the Company. Any unauthorized alteration, forgery or falsification of the content or appearance of this document is unlawful and offenders may be prosecuted to the fullest extent of the law. Unless otherwise stated the results shown in this test report refer only to the sample(s) tested and such sample(s) are retained for 30 days only.



3rd Building, No. 889, Yishan Road, Xuhui District Shanghai, China 200233

t (86-21)61402666*2013 f (86-21)54500353

www.cn.sgs.com e sgs.china@sgs.com

中国·上海·徐汇区宜山路889号3号楼 邮编:200233

t (86-21)61402666*2013 f (86-21)54500353

Test Report

No.: SHHG1412047293FT-01

Date: JAN. 23, 2015

Page: 7 of 49

Test Property	Test Method	Requirements	Internal Use
		of 60-lb applied to the backrest 8-in above the seat (if the backrest is less than 8-in above the seat, the load is applied to the top of the backrest) in the center of the backrest and at 90° to its plane for 1-min with no evidence of structural damage or loss in serviceability and with no loss in functional operability(if applicable)	
Locking/Latching Mechanisms	Actual Use	<p>Erect the product in accordance with the manufacturer's instructions and secure the product without impeding the normal folding motion</p> <p>The chair does not fold when a force of 45-lbf (200 N) is applied to the product in the direction normally associated with folding. Apply the force gradually over a 5-sec period and maintain for an additional 10-sec, repeat this procedure 5 times within a 2-min period</p> <p>With the product in each of the manufacturer's recommended use positions, gradually apply a force of 10-lbf to the locking mechanism in the direction tending to unlock/unlatch it. The locking/latching mechanism does not unlock/unlatch until a minimum force of 10-lbf has been achieved (not required for double action locking/latching devices, or single action devices that are activated simultaneously)</p>	Not applicable
Static Load Test	ASTM F2613	The load shall be applied vertically down to the seating surface over a period of 10s and shall remain in place for 60s. It is permissible to use a fixture to apply the load to the product. The static load shall be applied once. Static test load shall be 3 times the manufacturers maximum recommended weight or 3 times the test weight for the corresponding chair width given in	Pass

This document is issued by the Company subject to its General Conditions of Service printed overleaf, available on request or accessible at http://www.sgs.com/terms_and_conditions.htm and for electronic format documents, subject to Terms and Conditions for Electronic Documents at www.sgs.com/terms_e-document.htm. Attention is drawn to the limitation of liability, indemnification and jurisdiction issues defined therein. Any holder of this document is advised that information contained hereon reflects the Company's findings at the time of its intervention only and within the limits of Client's instructions, if any. The Company's sole responsibility is to its Client and this document does not exonerate parties to a transaction from exercising all their rights and obligations under the transaction documents. This document cannot be reproduced except in full, without prior written approval of the Company. Any unauthorized alteration, forgery or falsification of the content or appearance of this document is unlawful and offenders may be prosecuted to the fullest extent of the law. Unless otherwise stated the results shown in this test report refer only to the sample(s) tested and such sample(s) are retained for 30 days only.



SGS-CSTC Standards Technical Services Co., Ltd.
Shanghai Branch

3rd Building, No. 889, Yishan Road, Xuhui District Shanghai, China 200233

t (86-21)61402666*2013 f (86-21)54500353

www.cn.sgs.com
e sgs.china@sgs.com

中国·上海·徐汇区宜山路889号3号楼

邮编: 200233

t (86-21)61402666*2013 f (86-21)54500353

Test Report

No.: SHHG1412047293FT-01

Date: JAN. 23, 2015

Page: 8 of 49

Test Property	Test Method	Requirements	Internal Use
		ASTM F2613 Section 6.7.6.1, Table 1, whichever is greater Load Applied <u>153lb</u>	
Fatigue Test (Performed on a separate sample)	ASTM F2613	The load shall be applied vertically down to the seating surface over a period of 2s, held for a period of 5s, and then be totally removed from the product. This cycle shall be repeated for 500 cycles at a rate of 6 cycles per minute. The fatigue test load shall be the manufacturer's maximum recommended weight or the test weight for the corresponding chair width given in ASTM F2613 Section 6.7.6.1, Table 1, whichever is greater Load Applied <u>153lb</u>	Pass
Static Load Test	Adapted from ANSI/BIFMA X5.4	Withstands a 120-lb load applied to the center of the seat for 24-hrs without collapsing or visible evidence of structural damage such as breaks, fractures, or cracks (if rated load is provided use twice the rated load; but not less than 120-lb and not exceeding 300-lb)	Pass
Dynamic proof load test	Adapted from ANSI/BIFMA X5.1	Withstands a 90-lb load dropped from the height of 6-in onto the seat 1-time, with no evidence of catastrophic failure or structural damage which creates a hazardous condition including small parts, sharp parts, sharp edges, and without disengaging of the folding/locking / latching mechanism (if provided). The 90 lb load shall be centered side – to – side on the seat and shall be positioned not more than 1/2 inch from the most forward surface of the backrest during free fall. The load shall not contact the backrest during the free fall.	Pass
Dynamic proof load test	ASTM F2613	Following the 120-lb static load test, ASTM static load test, and fatigue test and dynamic proof load test above, the chairs shall not generate any sharp edges, sharp corners, sharp points, or any scissoring, shearing or pinch points. The product shall remain functional upon completion of the testing. Some	Pass

This document is issued by the Company subject to its General Conditions of Service printed overleaf, available on request or accessible at http://www.sgs.com/terms_and_conditions.htm and for electronic format documents, subject to Terms and Conditions for Electronic Documents at www.sgs.com/terms_e-document.htm. Attention is drawn to the limitation of liability, indemnification and jurisdiction issues defined therein. Any holder of this document is advised that information contained hereon reflects the Company's findings at the time of its intervention only and within the limits of Client's instructions, if any. The Company's sole responsibility is to its Client and this document does not exonerate parties to a transaction from exercising all their rights and obligations under the transaction documents. This document cannot be reproduced except in full, without prior written approval of the Company. Any unauthorized alteration, forgery or falsification of the content or appearance of this document is unlawful and offenders may be prosecuted to the fullest extent of the law. Unless otherwise stated the results shown in this test report refer only to the sample(s) tested and such sample(s) are retained for 30 days only.

Test Report

No.: SHHG1412047293FT-01

Date: JAN. 23, 2015

Page: 9 of 49

Test Property	Test Method	Requirements	Internal Use
		deformation of the chair is permissible provided that the preceding requirements are met. These requirements apply to folding chairs with either rigid seating surfaces or sling-type seating surfaces suspended from a frame regardless of whether the available seating width of the chair is limited by a structure such as arm rests.	
Corrosion Resistance	Actual use	Metallic components withstand 7-hrs exposure to 100% relative humidity at 100°F with no major corrosion or other major visual change observed.	Pass
*Colorfastness	AATCC Test Method 8	Fabric does not show noticeable color transfer in dry and wet crocking and exhibits a colorfastness of : Leather and Denim tested to colorfastness Grade 2.0(wet) Grade 3.0 (dry) All other Fabrics tested to colorfastness of Grade 3.0(wet) Grade 4.0 (dry)	Not applicable
*Colorfastness to light	AATCC Test Method 16	Note: Perform this test on all products intended for outdoor use and items labeled fade resistant or similar Wal-Mart USA Department 16 Products Only Fabric or vinyl does not fade excessively when exposed to 80 AFUs of UV light and exhibits a minimum colorfastness of Grade 3.0 Actual _____ Other Products Fabric or vinyl does not fade excessively when exposed to 40 AFUs of UV light and exhibit a minimum colorfastness of Grade 4.0 Actual _____	Not applicable
*Flame retardants	Standard Measurement	Foam and textile components, when tested separately for penta-BDE, octa-BDE, or deca-BDE, meet one of the following	Not applicable

This document is issued by the Company subject to its General Conditions of Service printed overleaf, available on request or accessible at http://www.sgs.com/terms_and_conditions.htm and for electronic format documents, subject to Terms and Conditions for Electronic Documents at www.sgs.com/terms_e-document.htm. Attention is drawn to the limitation of liability, indemnification and jurisdiction issues defined therein. Any holder of this document is advised that information contained hereon reflects the Company's findings at the time of its intervention only and within the limits of Client's instructions, if any. The Company's sole responsibility is to its Client and this document does not exonerate parties to a transaction from exercising all their rights and obligations under the transaction documents. This document cannot be reproduced except in full, without prior written approval of the Company. Any unauthorized alteration, forgery or falsification of the content or appearance of this document is unlawful and offenders may be prosecuted to the fullest extent of the law. Unless otherwise stated the results shown in this test report refer only to the sample(s) tested and such sample(s) are retained for 30 days only.



Test Report

No.: SHHG1412047293FT-01

Date: JAN. 23, 2015

Page: 10 of 49

Test Property	Test Method	Requirements	Internal Use
		<p>Bromine lever is <300ppm thwn tested using TRF _____Y/N</p> <p>Or if 300ppm or greater is detected When tested using the GC/MS method, penta-BDE, octa-BDE, and deca-BDE levels individually do not exceed 1000ppm _____Y/N</p> <p>Or Documentation dated within 1 year is provided indicating the foam and textile of the product do not contain levels of penta-BDE, octa-BDE, and deca-BDE in excess of 1000ppm individually _____Y/N Date_____</p>	
*Chlorinated Tris(TECEP AND TDCPP)	Standard Measurement	<p>Foam and textile components, when tested separately for Chlorinated TRIS (TCEP or TDCPP) meet one of the following: When tested using the GC/MS method, Chlorinated TRIS (TCEP or TDCPP) levels individually do not exceed 1000ppm , 1000mg/kg _____Y/N</p> <p>Or Documentation , a passing test report or "Supplier Certification for affected product", dated within 1 year is provided indicating the foam and textiles of the product do not contain level of Chlorinated TRIS (TCEP or TDCPP) in excess of 1000ppm, 1000mg/kg individually _____Y/N Date_____</p>	Not applicable
*TB 117-2013 Flammability Testing	Standard Measurement	<p>Sample meets following requirements for TB 117-2013 flammability testing. Passing 3rd party test report from testing facility _____Y/N</p>	Not applicable
Restricted substances / Child safety	Standard Measurement	<p>Product meets the requirements of Restricted Chemical / Substance and Hazardous Components Testing for</p>	Pass See chemical result

This document is issued by the Company subject to its General Conditions of Service printed overleaf, available on request or accessible at http://www.sgs.com/terms_and_conditions.htm and for electronic format documents, subject to Terms and Conditions for Electronic Documents at www.sgs.com/terms_e-document.htm. Attention is drawn to the limitation of liability, indemnification and jurisdiction issues defined therein. Any holder of this document is advised that information contained hereon reflects the Company's findings at the time of its intervention only and within the limits of Client's instructions, if any. The Company's sole responsibility is to its Client and this document does not exonerate parties to a transaction from exercising all their rights and obligations under the transaction documents. This document cannot be reproduced except in full, without prior written approval of the Company. Any unauthorized alteration, forgery or falsification of the content or appearance of this document is unlawful and offenders may be prosecuted to the fullest extent of the law. Unless otherwise stated the results shown in this test report refer only to the sample(s) tested and such sample(s) are retained for 30 days only.





Test Report

No.: SHHG1412047293FT-01

Date: JAN. 23, 2015

Page: 11 of 49

Test Property	Test Method	Requirements	Internal Use
		Children's product	

This document is issued by the Company subject to its General Conditions of Service printed overleaf, available on request or accessible at http://www.sgs.com/terms_and_conditions.htm and, for electronic format documents, subject to Terms and Conditions for Electronic Documents at www.sgs.com/terms_e-document.htm. Attention is drawn to the limitation of liability, indemnification and jurisdiction issues defined therein. Any holder of this document is advised that information contained hereon reflects the Company's findings at the time of its intervention only and within the limits of Client's instructions, if any. The Company's sole responsibility is to its Client and this document does not exonerate parties to a transaction from exercising all their rights and obligations under the transaction documents. This document cannot be reproduced except in full, without prior written approval of the Company. Any unauthorized alteration, forgery or falsification of the content or appearance of this document is unlawful and offenders may be prosecuted to the fullest extent of the law. Unless otherwise stated the results shown in this test report refer only to the sample(s) tested and such sample(s) are retained for 30 days only.

SGS-CSTC Standards Technical Services Co., Ltd.
Shanghai Branch

3rd Building, No. 889, Yishan Road, Xuhui District Shanghai, China 200233
中国·上海·徐汇区宜山路889号3号楼

t (86-21)61402666*2013
t (86-21)61402666*2013

f (86-21)54500353
f (86-21)54500353
e sgs.china@sgs.com

Member of the SGS Group (SGS SA)

Test Report

No.: SHHG1412047293FT-01

Date: JAN. 23, 2015 Page: 12 of 49

For table:

Test Property	Test Method	Requirements	Internal Use
PHYSICAL CHARACTERISTICS			
Dimensions	Standard Measurement	Overall: Height <u>21.0-29.8in</u> Width <u>27.8in</u> Depth <u>21.5in</u> Desktop: Height <u>21.0-29.8in</u> Width <u>27.8in</u> Depth <u>21.5in</u> Hutch: Height <u>5.0in</u> Width <u>21.5in</u> Depth <u>16.8in</u>	/ Record only
Weight	Standard Measurement	<u>22.8lb</u> Wal-Mart USA Department 71 products meet the requirements of 17-58 weight supplement worksheet(Effective date 03/24/14)	/ Record only
Material	Standard Measurement	Legs/Base Plastic Desk top Plastic Hutch Plastic Fasteners Metal	/ Record only
CONSTRUCTION QUALITIES			
Finish/Workmanship	Visual Check	Free of nicks, burrs, pits, sharp edge, and any other defects which may affect serviceability or appearance of the finished product. Wood is well sanded and free from splits, worm holes, discoloration, saw and machine marks. Nail holes filled and sanded Good overall appearance with good alignment of components.	Pass
Construction	Standard measurement	Wood moisture content _____% (12% or less) Note: For WM USA products sold in Dept. 14 or Dept 74, 6%minimum to 12% maximum.	Not applicable
	Visual Check	Good rigidity and durability with corner	Pass

This document is issued by the Company subject to its General Conditions of Service printed overleaf, available on request or accessible at http://www.sgs.com/terms_and_conditions.htm and for electronic format documents, subject to Terms and Conditions for Electronic Documents at www.sgs.com/terms_e-document.htm. Attention is drawn to the limitation of liability, indemnification and jurisdiction issues defined therein. Any holder of this document is advised that information contained hereon reflects the Company's findings at the time of its intervention only and within the limits of Client's instructions, if any. The Company's sole responsibility is to its Client and this document does not exonerate parties to a transaction from exercising all their rights and obligations under the transaction documents. This document cannot be reproduced except in full, without prior written approval of the Company. Any unauthorized alteration, forgery or falsification of the content or appearance of this document is unlawful and offenders may be prosecuted to the fullest extent of the law. Unless otherwise stated the results shown in this test report refer only to the sample(s) tested and such sample(s) are retained for 30 days only.



Test Report

No.: SHHG1412047293FT-01

Date: JAN. 23, 2015

Page: 13 of 49

Test Property	Test Method	Requirements	Internal Use
		or lineal bracing provided	
	Visual Check	All metal surfaces are plated, coated or equivalent to inhibit corrosion.	Pass
	Visual Check	Means to prevent marring and /or scratching floor	Pass
	Visual Check	All drawers (with internal volume equal to or greater than 180-in ³ (1,161-cm ³)) and roll out shelves provide positive stop.	Not applicable
PERFORMANCE TESTING			
Operability Test	Actual Use	Each drawer, door or roll-out shelf demonstrates smooth and easy operation and withstands 100cycles of opening and closing without any noticeable damage or deformation Drawers(s) Door(s) Roll-out shelf (or shelves)	Pass
		Desk equipment with locks N Y/N Each lock demonstrates adequate and smooth operation during locking /unlocking.	Not applicable
Concentrated Functional load test for primary surface	Actual Use	Withstands a concentrated load of 200-lb (2X200-lb if length is >72-in, or if ganged unit) applied to a primary surface (a surface which has the apparent potential for the highest loading) with no evidence of structural damage or loss of serviceability. Concentrated load is applied for sixty(60) minutes through a 12-in diameter area placed 1-in from the edge, at the apparent weakest point. All extendible elements (such as drawers) shall be uniformly loaded with the distributed functional load and fully opened to the stop for the duration of the test. Keyboard surfaces shall be fully extended (not loaded).	Pass

This document is issued by the Company subject to its General Conditions of Service printed overleaf, available on request or accessible at http://www.sgs.com/terms_and_conditions.htm and for electronic format documents, subject to Terms and Conditions for Electronic Documents at www.sgs.com/terms_e-document.htm. Attention is drawn to the limitation of liability, indemnification and jurisdiction issues defined therein. Any holder of this document is advised that information contained hereon reflects the Company's findings at the time of its intervention only and within the limits of Client's instructions, if any. The Company's sole responsibility is to its Client and this document does not exonerate parties to a transaction from exercising all their rights and obligations under the transaction documents. This document cannot be reproduced except in full, without prior written approval of the Company. Any unauthorized alteration, forgery or falsification of the content or appearance of this document is unlawful and offenders may be prosecuted to the fullest extent of the law. Unless otherwise stated the results shown in this test report refer only to the sample(s) tested and such sample(s) are retained for 30 days only.





Test Report

No.: SHHG1412047293FT-01

Date: JAN. 23, 2015

Page: 14 of 49

Test Property	Test Method	Requirements	Internal Use
		Extendible elements – (Example: Drawers) All extendible elements are uniformly loaded with 0.017-lb/in ³ in the fully opened position Weight (mass) Applied Drawer#1 0.017lb/in ³ _____ lb Drawer#2 0.017lb/in ³ _____ lb Drawer#3 0.017lb/in ³ _____ lb Drawer#4 0.017lb/in ³ _____ lb Drawer#5 0.017lb/in ³ _____ lb Drawer#6 0.017lb/in ³ _____ lb ...	
		Static Load Test (total weight in all the drawers) _____ lb The maximum force that opens the drawer (with above load) or door (with no load) from its fully closed position to its fully extended or open position does not exceed 11.2-lb.	
Static Load Test – All other surfaces.	Actual Use	The product withstands a simultaneous loading of all other work surfaces and all load bearing elements loaded and extended (if extendable) as follows for 60 minutes with no evidence of structural damage or loss of serviceability.	Not applicable
		Secondary Surface /Hutch Top All secondary surfaces are uniformly loaded with 0.017-lb/in ³ . Calculates the load based on the height of the available space above the surface. The height value for the calculation shall not exceed 12 inches Surface#1 _____ lb Surface#2 _____ lb Surface#3 _____ lb Surface#4 _____ lb Surface#5 _____ lb Static Load Test (total weight in all the surface) _____ lb	Not applicable
		Key Board Surface Keyboard width less or equal to 36-in Apply 30-lb _____ Y/N Key board width exceed 36-in	Not applicable

This document is issued by the Company subject to its General Conditions of Service printed overleaf, available on request or accessible at http://www.sgs.com/terms_and_conditions.htm and for electronic format documents, subject to Terms and Conditions for Electronic Documents at www.sgs.com/terms_e-document.htm. Attention is drawn to the limitation of liability, indemnification and jurisdiction issues defined therein. Any holder of this document is advised that information contained hereon reflects the Company's findings at the time of its intervention only and within the limits of Client's instructions, if any. The Company's sole responsibility is to its Client and this document does not exonerate parties to a transaction from exercising all their rights and obligations under the transaction documents. This document cannot be reproduced except in full, without prior written approval of the Company. Any unauthorized alteration, forgery or falsification of the content or appearance of this document is unlawful and offenders may be prosecuted to the fullest extent of the law. Unless otherwise stated the results shown in this test report refer only to the sample(s) tested and such sample(s) are retained for 30 days only.



SGS-CSTC Standards Technical Services Co., Ltd.
 Shanghai Branch Laboratory

3rd Building, No. 889, Yishan Road, Xuhui District Shanghai, China 200233
 中国·上海·徐汇区宜山路889号3号楼

t (86-21)61402666*2013 f (86-21)54500353
 t (86-21)61402666*2013 f (86-21)54500353

www.cn.sgs.com
 e sgs.china@sgs.com



Test Report

No.: SHHG1412047293FT-01

Date: JAN. 23, 2015

Page: 15 of 49

Test Property	Test Method	Requirements	Internal Use
		Apply 4b-lb _____ Y/N	
		Equipment Surface All equipment surfaces shall be loaded 40lb each Surface#1 _____ lb Surface#2 _____ lb Static Load Test (total weight in all the surface) _____ lb	Not applicable
		Writing Shelf All writing shelves shall be loaded 25lb each Surface#1 _____ lb Surface#2 _____ lb Static Load Test (total weight in all the writing) _____ lb	Not applicable
Stability	Actual Use	The desk is leveled in its normal operating position. Two largest capacity drawers or other extendible members, which when loaded and in use create the least stable condition, are loaded with 0.017-lb/in ³ (1.195-g/m ³) (or load as applicable if other than drawers ;) See tab below for drawer weight calculator). The third largest drawer or other storage element is loaded to 50% of its capacity and , if extendible, closed. The desk does not tip over when two loaded drawers are extended to their fullest extension and the doors (if provided) are opened to 90° from the closed position, or to the most unstable configuration.	Not applicable
		Desk with Hutch Total height of desk and hutch is higher than 42-in (1.067-m) _____ Y/N Withstands the following test with no tip over, dislodging of the desk and hutch assembly , or sudden and major change in structural integrity. Horizontal force is gradually applied through the center of an 8-in (20.32-cm) diameter disk until 40-lb (177.93-N) is reached , or the product tilts to 10°, whichever occurs first. The force is applied to the following locations 54-in (1.372-m) from the floor or 4-in (10.16-cm) down from the hutch	Not applicable

This document is issued by the Company subject to its General Conditions of Service printed overleaf, available on request or accessible at http://www.sgs.com/terms_and_conditions.htm and for electronic format documents, subject to Terms and Conditions for Electronic Documents at www.sgs.com/terms_e-document.htm. Attention is drawn to the limitation of liability, indemnification and jurisdiction issues defined therein. Any holder of this document is advised that information contained hereon reflects the Company's findings at the time of its intervention only and within the limits of Client's instructions, if any. The Company's sole responsibility is to its Client and this document does not exonerate parties to a transaction from exercising all their rights and obligations under the transaction documents. This document cannot be reproduced except in full, without prior written approval of the Company. Any unauthorized alteration, forgery or falsification of the content or appearance of this document is unlawful and offenders may be prosecuted to the fullest extent of the law. Unless otherwise stated the results shown in this test report refer only to the sample(s) tested and such sample(s) are retained for 30 days only.



SGS-CSTC Standards Technical Services Co., Ltd.
Shanghai Branch Laboratory

3rd Building, No. 889, Yishan Road, Xuhui District Shanghai, China 200233
中国·上海·徐汇区宜山路889号3号楼

t (86-21)61402666*2013 f (86-21)54500353
t (86-21)61402666*2013 f (86-21)54500353

www.cn.sgs.com
e sgs.china@sgs.com

Test Report

No.: SHHG1412047293FT-01

Date: JAN. 23, 2015 Page: 16 of 49

Test Property	Test Method	Requirements	Internal Use
		top, whichever is lower; Front , left side Front, right side Back, Left side Back, right side Center of the left side Center of the right side	
Leg Strength	Actual Use	Inward Force The table is positioned on its top and secured in place. Each leg/side panel/ T-leg withstands a horizontal force equal to half of the unit weight (not to exceed 100-lb or 45.36-kg) for one(1) minute, applied inward in line with the unit top leading edge followed by an inward force applied in line with the unit top side edge with no evidence of structural damage or loss in consumer serviceability Force applied <u>11.46lb</u>	Pass
		Outward Force The table is positioned on its top and secured in place. Each leg/side panel/ T-leg withstands a horizontal force equal to one-half of the force applied in “In ward Force test” (above) for one(1) minute, applied outward in line with the unit top leading edge followed by an outward force applied in line with the unit top side edge with no evidence of structural damage or loss in consumer serviceability Force applied <u>5.73lb</u>	Pass
Hinged Door Strength	Actual Use	Door Height Vertically hinged door demonstrates no loosening of the hinges or any other loss of serviceability when an appropriate load is equally distributed on both sides of the door with its center of gravity acting 4 in (10cm) from the edge of the door opposite the hinge. The door is cycled ten (10) times from a position 45° from fully closed to a position 10 ° from fully opened (but not more than 135°) and returned. Door Height Load	Not applicable

This document is issued by the Company subject to its General Conditions of Service printed overleaf, available on request or accessible at http://www.sgs.com/terms_and_conditions.htm and for electronic format documents, subject to Terms and Conditions for Electronic Documents at www.sgs.com/terms_e-document.htm. Attention is drawn to the limitation of liability, indemnification and jurisdiction issues defined therein. Any holder of this document is advised that information contained hereon reflects the Company's findings at the time of its intervention only and within the limits of Client's instructions, if any. The Company's sole responsibility is to its Client and this document does not exonerate parties to a transaction from exercising all their rights and obligations under the transaction documents. This document cannot be reproduced except in full, without prior written approval of the Company. Any unauthorized alteration, forgery or falsification of the content or appearance of this document is unlawful and offenders may be prosecuted to the fullest extent of the law. Unless otherwise stated the results shown in this test report refer only to the sample(s) tested and such sample(s) are retained for 30 days only.



SGS-CSTC Standards Technical Services Co., Ltd.
Shanghai Branch Laboratory

3rd Building, No. 889, Yishan Road, Xuhui District Shanghai, China 200233
中国·上海·徐汇区宜山路889号3号楼

t (86-21)61402666*2013 f (86-21)54500353
t (86-21)61402666*2013 f (86-21)54500353

www.cn.sgs.com
e sgs.china@sgs.com



Test Report

No.: SHHG1412047293FT-01

Date: JAN. 23, 2015 Page: 17 of 49

Test Property	Test Method	Requirements	Internal Use
		Less than 18in (46cm) Equal to 18in(46cm) or greater Load applied	22lbs(10kg) 44lbs(20kg) _____lb
ANALYTICAL (Voluntary chemical testing)			
USA			
*Lead content in paint or other similar surface coating materials	16 CFR 1303	Lead content: ≤90ppm	Pass See chemical result
Canada			
*Lead and Mercury Content in Surface Coating Materials	Acid digestion/ICP or AAS	Surface Coating Materials SOR/2005-109 and its amendment SOR/2010-224: Lead content: ≤90mg/kg Mercury content: ≤10mg/kg	Not applicable

This document is issued by the Company subject to its General Conditions of Service printed overleaf, available on request or accessible at http://www.sgs.com/terms_and_conditions.htm and for electronic format documents, subject to Terms and Conditions for Electronic Documents at www.sgs.com/terms_e-document.htm. Attention is drawn to the limitation of liability, indemnification and jurisdiction issues defined therein. Any holder of this document is advised that information contained hereon reflects the Company's findings at the time of its intervention only and within the limits of Client's instructions, if any. The Company's sole responsibility is to its Client and this document does not exonerate parties to a transaction from exercising all their rights and obligations under the transaction documents. This document cannot be reproduced except in full, without prior written approval of the Company. Any unauthorized alteration, forgery or falsification of the content or appearance of this document is unlawful and offenders may be prosecuted to the fullest extent of the law. Unless otherwise stated the results shown in this test report refer only to the sample(s) tested and such sample(s) are retained for 30 days only.



3rd Building, No. 889, Yishan Road, Xuhui District Shanghai, China 200233 t (86-21)61402666*2013 f (86-21)54500353 www.cn.sgs.com
 中国·上海·徐汇区宜山路889号3号楼 邮编: 200233 t (86-21)61402666*2013 f (86-21)54500353 e sgs.china@sgs.com

Member of the SGS Group (SGS SA)

Test Report

No.: SHHG1412047293FT-01

Date: JAN. 23, 2015

Page: 18 of 49

Chemical result:

Test Part Description :

Specimen No.	SGS Sample ID	Description
SN1	SHA14-248783.001	Brown paper box
SN2	SHA14-248783.002	Transparent plastic film with adhesive
SN3	SHA14-248783.003	White foam film
SN4	SHA14-248783.004	Transparent plastic film
SN5	SHA14-248783.005	White foam
SN6	SHA14-248783.006	White paper with black(instruction book)

Remarks :

- (1) 1 mg/kg = 0.0001%
- (2) MDL = Method Detection Limit
- (3) ND = Not Detected (< MDL)
- (4) "-" = Not Regulated

TPCH - Toxics in Packaging Clearinghouse (formerly CONEG)

Test Method : Sample digestion. Analysis of Cadmium, Lead, Mercury were performed by ICP-OES. Analysis of Hexavalent Chromium (Cr (VI)) was performed by UV-Vis.

Test Item(s)	Limit	Unit	MDL	001	002	003
Lead (Pb)	-	mg/kg	5	6	ND	ND
Hexavalent Chromium (CrVI)	-	mg/kg	5	ND	ND	ND
Cadmium (Cd)	-	mg/kg	5	ND	ND	ND
Mercury (Hg)	-	mg/kg	5	ND	ND	ND
Total (Pb + Cd + Cr VI + Hg)	100	mg/kg	-	6	ND	ND

Test Item(s)	Limit	Unit	MDL	004	005	006
Lead (Pb)	-	mg/kg	5	ND	ND	ND
Hexavalent Chromium (CrVI)	-	mg/kg	5	ND	ND	ND
Cadmium (Cd)	-	mg/kg	5	ND	ND	ND
Mercury (Hg)	-	mg/kg	5	ND	ND	ND
Total (Pb + Cd + Cr VI + Hg)	100	mg/kg	-	ND	ND	ND

Notes :

(1) The TPCH legislation has been enacted by California, Connecticut, Florida, Georgia, Illinois, Iowa, Maine, Maryland, Minnesota, Missouri, New Hampshire, New Jersey, New York, Pennsylvania, Rhode Island, Vermont, Virginia, Washington and Wisconsin.

This document is issued by the Company subject to its General Conditions of Service printed overleaf, available on request or accessible at http://www.sgs.com/terms_and_conditions.htm and, for electronic format documents, subject to Terms and Conditions for Electronic Documents at www.sgs.com/terms_e-document.htm. Attention is drawn to the limitation of liability, indemnification and jurisdiction issues defined therein. Any holder of this document is advised that information contained hereon reflects the Company's findings at the time of its intervention only and within the limits of Client's instructions, if any. The Company's sole responsibility is to its Client and this document does not exonerate parties to a transaction from exercising all their rights and obligations under the transaction documents. This document cannot be reproduced except in full, without prior written approval of the Company. Any unauthorized alteration, forgery or falsification of the content or appearance of this document is unlawful and offenders may be prosecuted to the fullest extent of the law. Unless otherwise stated the results shown in this test report refer only to the sample(s) tested and such sample(s) are retained for 30 days only.



3rd Building, No. 889, Yishan Road, Xuhui District Shanghai, China 200233

t (86-21)61402666*2013 f (86-21)54500353

www.cn.sgs.com
e sgs.china@sgs.com

中国·上海·徐汇区宜山路889号3号楼 邮编:200233

t (86-21)61402666*2013 f (86-21)54500353

Test Report

No.: SHHG1412047293FT-01

Date: JAN. 23, 2015

Page: 19 of 49



SHA14-248783.001



SHA14-248783.002



SHA14-248783.003

This document is issued by the Company subject to its General Conditions of Service printed overleaf, available on request or accessible at http://www.sgs.com/terms_and_conditions.htm and for electronic format documents, subject to Terms and Conditions for Electronic Documents at www.sgs.com/terms_e-document.htm. Attention is drawn to the limitation of liability, indemnification and jurisdiction issues defined therein. Any holder of this document is advised that information contained hereon reflects the Company's findings at the time of its intervention only and within the limits of Client's instructions, if any. The Company's sole responsibility is to its Client and this document does not exonerate parties to a transaction from exercising all their rights and obligations under the transaction documents. This document cannot be reproduced except in full, without prior written approval of the Company. Any unauthorized alteration, forgery or falsification of the content or appearance of this document is unlawful and offenders may be prosecuted to the fullest extent of the law. Unless otherwise stated the results shown in this test report refer only to the sample(s) tested and such sample(s) are retained for 30 days only.



SHA14-248783.004



SHA14-248783.005



SHA14-248783.006

This document is issued by the Company subject to its General Conditions of Service printed overleaf, available on request or accessible at http://www.sgs.com/terms_and_conditions.htm and for electronic format documents, subject to Terms and Conditions for Electronic Documents at www.sgs.com/terms_e-document.htm. Attention is drawn to the limitation of liability, indemnification and jurisdiction issues defined therein. Any holder of this document is advised that information contained hereon reflects the Company's findings at the time of its intervention only and within the limits of Client's instructions, if any. The Company's sole responsibility is to its Client and this document does not exonerate parties to a transaction from exercising all their rights and obligations under the transaction documents. This document cannot be reproduced except in full, without prior written approval of the Company. Any unauthorized alteration, forgery or falsification of the content or appearance of this document is unlawful and offenders may be prosecuted to the fullest extent of the law. Unless otherwise stated the results shown in this test report refer only to the sample(s) tested and such sample(s) are retained for 30 days only.

Test Report

No.: SHHG1412047293FT-01

Date: JAN. 23, 2015

Page: 21 of 49

Test Part Description :

Specimen No.	SGS Sample ID	Description
SN1	SHA15-000104.001	Transparent plastic valve bag
SN2	SHA15-000104.002	Transparent plastic bag with black

Remarks :

- (1) 1 mg/kg = 0.0001%
- (2) MDL = Method Detection Limit
- (3) ND = Not Detected (< MDL)
- (4) "-" = Not Regulated

TPCH - Toxics in Packaging Clearinghouse (formerly CONEG)

Test Method : Sample digestion. Analysis of Cadmium, Lead, Mercury were performed by ICP-OES. Analysis of Hexavalent Chromium (Cr (VI)) was performed by UV-Vis.

Test Item(s)	Limit	Unit	MDL	001	002
Lead (Pb)	-	mg/kg	5	ND	ND
Hexavalent Chromium (CrVI)	-	mg/kg	5	ND	ND
Cadmium (Cd)	-	mg/kg	5	ND	ND
Mercury (Hg)	-	mg/kg	5	ND	ND
Total (Pb + Cd + Cr VI + Hg)	100	mg/kg	-	ND	ND

Notes :

(1) The TPCH legislation has been enacted by California, Connecticut, Florida, Georgia, Illinois, Iowa, Maine, Maryland, Minnesota, Missouri, New Hampshire, New Jersey, New York, Pennsylvania, Rhode Island, Vermont, Virginia, Washington and Wisconsin.



SHA15-000104.001

This document is issued by the Company subject to its General Conditions of Service printed overleaf, available on request or accessible at http://www.sgs.com/terms_and_conditions.htm and for electronic format documents, subject to Terms and Conditions for Electronic Documents at www.sgs.com/terms_e-document.htm. Attention is drawn to the limitation of liability, indemnification and jurisdiction issues defined therein. Any holder of this document is advised that information contained hereon reflects the Company's findings at the time of its intervention only and within the limits of Client's instructions, if any. The Company's sole responsibility is to its Client and this document does not exonerate parties to a transaction from exercising all their rights and obligations under the transaction documents. This document cannot be reproduced except in full, without prior written approval of the Company. Any unauthorized alteration, forgery or falsification of the content or appearance of this document is unlawful and offenders may be prosecuted to the fullest extent of the law. Unless otherwise stated the results shown in this test report refer only to the sample(s) tested and such sample(s) are retained for 30 days only.



SHA15-000104.002

This document is issued by the Company subject to its General Conditions of Service printed overleaf, available on request or accessible at http://www.sgs.com/terms_and_conditions.htm and, for electronic format documents, subject to Terms and Conditions for Electronic Documents at www.sgs.com/terms_e-document.htm. Attention is drawn to the limitation of liability, indemnification and jurisdiction issues defined therein. Any holder of this document is advised that information contained hereon reflects the Company's findings at the time of its intervention only and, within the limits of Client's instructions, if any. The Company's sole responsibility is to its Client and this document does not exonerate parties to a transaction from exercising all their rights and obligations under the transaction documents. This document cannot be reproduced except in full, without prior written approval of the Company. Any unauthorized alteration, forgery or falsification of the content or appearance of this document is unlawful and offenders may be prosecuted to the fullest extent of the law. Unless otherwise stated the results shown in this test report refer only to the sample(s) tested and such sample(s) are retained for 30 days only.

Test Report

No.: SHHG1412047293FT-01

Date: JAN. 23, 2015 Page: 23 of 49

Test Part Description :

Specimen No.	SGS Sample ID	Description
SN1	SHA14-249148.001	White coating(frame)
SN2	SHA14-249148.002	Black coating with white(frame)
SN3	SHA14-249148.003	White coating on wood(desk)
SN4	SHA14-249148.004	Colorful coating on wood(desk)
SN5	SHA14-249148.005	Colorful paper sticker
SN6	SHA14-249148.006	Black soft plastic foot pad(round)
SN7	SHA14-249148.007	Pink soft plastic(desk)
SN8	SHA14-249148.008	Green soft plastic(desk)
SN9	SHA14-249148.009	Blue soft plastic(desk)
SN10	SHA14-249148.010	Black plastic end cap
SN11	SHA14-249148.011	Pink plastic end cap
SN12	SHA14-249148.012	Pink plastic pad(chair)
SN13	SHA14-249148.013	Green plastic pad(chair)
SN14	SHA14-249148.014	Blue plastic pad(chair)
SN15	SHA14-249148.015	Brown plastic(desk)
SN16	SHA14-249148.016	Transparent plastic washer
SN17	SHA14-249148.017	Metal frame without coating
SN18	SHA14-249148.018	Silvery blue metal screw(big)
SN19	SHA14-249148.019	Silvery blue metal screw(small)
SN20	SHA14-249148.020	Silvery blue metal washer(frame)
SN21	SHA14-249148.021	Silvery blue metal bolt
SN22	SHA14-249148.022	Silvery metal hinge(desk)
SN23	SHA14-249148.023	Silvery metal screw(desk)
SN24	SHA14-249148.024	Silvery metal rivet(desk)
SN25	SHA14-249148.025	Silvery metal sheet(desk)
SN26	SHA14-249148.026	Silvery metal rod(desk)
SN27	SHA14-249148.027	Silvery metal tube(desk)
SN28	SHA14-249148.028	Silvery metal hook

Remarks :

- (1) 1 mg/kg = 0.0001%
- (2) MDL = Method Detection Limit
- (3) ND = Not Detected (< MDL)
- (4) "-" = Not Regulated

This document is issued by the Company subject to its General Conditions of Service printed overleaf, available on request or accessible at http://www.sgs.com/terms_and_conditions.htm and for electronic format documents, subject to Terms and Conditions for Electronic Documents at www.sgs.com/terms_e-document.htm. Attention is drawn to the limitation of liability, indemnification and jurisdiction issues defined therein. Any holder of this document is advised that information contained hereon reflects the Company's findings at the time of its intervention only and within the limits of Client's instructions, if any. The Company's sole responsibility is to its Client and this document does not exonerate parties to a transaction from exercising all their rights and obligations under the transaction documents. This document cannot be reproduced except in full, without prior written approval of the Company. Any unauthorized alteration, forgery or falsification of the content or appearance of this document is unlawful and offenders may be prosecuted to the fullest extent of the law. Unless otherwise stated the results shown in this test report refer only to the sample(s) tested and such sample(s) are retained for 30 days only.



Test Report

No.: SHHG1412047293FT-01

Date: JAN. 23, 2015 Page: 24 of 49

Part 1303, Title 16, Code of Federal Regulations, Chapter II – Consumer Products Safety Commission of U.S.A. requirement-Lead

Test Method : With reference to CPSC Test Method: CPSC-CH-E1003-09.1, analysis was performed by AAS.

<u>Test Item(s)</u>	<u>Limit</u>	<u>Unit</u>	<u>MDL</u>	<u>001</u>	<u>002</u>	<u>003</u>
Lead (Pb)	0.009	%	0.002	ND	ND	ND
Conclusion				PASS	PASS	PASS
<u>Test Item(s)</u>	<u>Limit</u>	<u>Unit</u>	<u>MDL</u>	<u>004</u>		
Lead (Pb)	0.009	%	0.002	ND		
Conclusion				PASS		

Phthalate content

Test Method : With reference to CPSC-CH-C1001-09.3, analysis was performed by GC-MS

<u>Test Item(s)</u>	<u>CAS NO.</u>	<u>Limit</u>	<u>Unit</u>	<u>MDL</u>	<u>001</u>	<u>002</u>	<u>003</u>
Dibutyl Phthalate (DBP)	84-74-2	0.1	%	0.003	ND	ND	ND
Benzylbutyl Phthalate (BBP)	85-68-7	0.1	%	0.003	ND	ND	ND
Bis-(2-ethylhexyl) Phthalate (DEHP)	117-81-7	0.1	%	0.003	ND	ND	ND
Diisononyl Phthalate (DINP)	28553-12-0 /68515-48-0	0.1	%	0.01	ND	ND	ND
Di-n-octyl Phthalate (DNOP)	117-84-0	0.1	%	0.003	ND	ND	ND
Diisodecyl Phthalate (DIDP)	26761-40-0 /68515-49-1	0.1	%	0.01	ND	ND	ND
Di-n-hexyl Phthalate (DnHP)	84-75-3	0.1	%	0.003	ND	ND	ND
Conclusion					PASS	PASS	PASS

This document is issued by the Company subject to its General Conditions of Service printed overleaf, available on request or accessible at http://www.sgs.com/terms_and_conditions.htm and for electronic format documents, subject to Terms and Conditions for Electronic Documents at www.sgs.com/terms_e-document.htm. Attention is drawn to the limitation of liability, indemnification and jurisdiction issues defined therein. Any holder of this document is advised that information contained hereon reflects the Company's findings at the time of its intervention only and within the limits of Client's instructions, if any. The Company's sole responsibility is to its Client and this document does not exonerate parties to a transaction from exercising all their rights and obligations under the transaction documents. This document cannot be reproduced except in full, without prior written approval of the Company. Any unauthorized alteration, forgery or falsification of the content or appearance of this document is unlawful and offenders may be prosecuted to the fullest extent of the law. Unless otherwise stated the results shown in this test report refer only to the sample(s) tested and such sample(s) are retained for 30 days only.



SGS-CSTC Standards Technical Services Co., Ltd.
Shanghai Branch

3rd Building, No. 889, Yishan Road, Xuhui District Shanghai, China 200233
中国·上海·徐汇区宜山路889号3号楼

t (86-21)61402666*2013
f (86-21)54500353

www.cn.sgs.com
e sgs.china@sgs.com

Test Report

No.: SHHG1412047293FT-01

Date: JAN. 23, 2015

Page: 25 of 49

Test Item(s)	CAS NO.	Limit	Unit	MDL	004	005	006
Dibutyl Phthalate (DBP)	84-74-2	0.1	%	0.003	ND	ND	ND
Benzylbutyl Phthalate (BBP)	85-68-7	0.1	%	0.003	ND	ND	ND
Bis-(2-ethylhexyl) Phthalate (DEHP)	117-81-7	0.1	%	0.003	ND	0.009	ND
Diisononyl Phthalate (DINP)	28553-12-0 /68515-48-0	0.1	%	0.01	ND	ND	ND
Di-n-octyl Phthalate (DNOP)	117-84-0	0.1	%	0.003	ND	ND	ND
Diisodecyl Phthalate (DIDP)	26761-40-0 /68515-49-1	0.1	%	0.01	ND	ND	ND
Di-n-hexyl Phthalate (DnHP)	84-75-3	0.1	%	0.003	ND	ND	ND
Conclusion					PASS	PASS	PASS

Test Item(s)	CAS NO.	Limit	Unit	MDL	007	008	009
Dibutyl Phthalate (DBP)	84-74-2	0.1	%	0.003	ND	ND	ND
Benzylbutyl Phthalate (BBP)	85-68-7	0.1	%	0.003	ND	ND	ND
Bis-(2-ethylhexyl) Phthalate (DEHP)	117-81-7	0.1	%	0.003	ND	ND	ND
Diisononyl Phthalate (DINP)	28553-12-0 /68515-48-0	0.1	%	0.01	ND	ND	ND
Di-n-octyl Phthalate (DNOP)	117-84-0	0.1	%	0.003	ND	ND	ND
Diisodecyl Phthalate (DIDP)	26761-40-0 /68515-49-1	0.1	%	0.01	ND	ND	ND
Di-n-hexyl Phthalate (DnHP)	84-75-3	0.1	%	0.003	ND	ND	ND
Conclusion					PASS	PASS	PASS

Notes :

- (1) The maximum permissible limit is quoted from the client requirement

This document is issued by the Company subject to its General Conditions of Service printed overleaf, available on request or accessible at http://www.sgs.com/terms_and_conditions.htm and for electronic format documents, subject to Terms and Conditions for Electronic Documents at www.sgs.com/terms_e-document.htm. Attention is drawn to the limitation of liability, indemnification and jurisdiction issues defined therein. Any holder of this document is advised that information contained hereon reflects the Company's findings at the time of its intervention only and within the limits of Client's instructions, if any. The Company's sole responsibility is to its Client and this document does not exonerate parties to a transaction from exercising all their rights and obligations under the transaction documents. This document cannot be reproduced except in full, without prior written approval of the Company. Any unauthorized alteration, forgery or falsification of the content or appearance of this document is unlawful and offenders may be prosecuted to the fullest extent of the law. Unless otherwise stated the results shown in this test report refer only to the sample(s) tested and such sample(s) are retained for 30 days only.



SGS-CSTI Standards Technical Services Co., Ltd.
Shanghai Branch

3rd Building, No. 889, Yishan Road, Xuhui District Shanghai, China 200233
中国·上海·徐汇区宜山路889号3号楼

t (86-21)61402666*2013
f (86-21)61402666*2013

www.cn.sgs.com
e sgs.china@sgs.com



Test Report

No.: SHHG1412047293FT-01

Date: JAN. 23, 2015

Page: 26 of 49

California Bill AB 1108 : 2007 - Phthalates

Test Method : With reference to CPSC-CH-C1001-09.3, analysis was performed by GC-MS

Test Item(s)	CAS NO.	Limit	Unit	MDL	001	002	003
1. For all toys and childcare articles							
Dibutyl Phthalate (DBP)	84-74-2	0.1	%	0.003	ND	ND	ND
Benzylbutyl Phthalate (BBP)	85-68-7	0.1	%	0.003	ND	ND	ND
Bis-(2-ethylhexyl) Phthalate (DEHP)	117-81-7	0.1	%	0.003	ND	ND	ND

2. For any toy or childcare article intended for use by a child under three years of age if that product

Test Item(s)	CAS NO.	Limit	Unit	MDL	001	002	003
can be placed in the child's mouth							
Diisononyl Phthalate (DINP)	28553-12-0 /68515-48-0	0.1	%	0.01	ND	ND	ND
Di-n-octyl Phthalate (DNOP)	117-84-0	0.1	%	0.003	ND	ND	ND
Diisodecyl Phthalate (DIDP)	26761-40-0 /68515-49-1	0.1	%	0.01	ND	ND	ND

Conclusion **PASS** **PASS** **PASS**

Test Item(s)	CAS NO.	Limit	Unit	MDL	004	005	006
1. For all toys and childcare articles							
Dibutyl Phthalate (DBP)	84-74-2	0.1	%	0.003	ND	ND	ND
Benzylbutyl Phthalate (BBP)	85-68-7	0.1	%	0.003	ND	ND	ND
Bis-(2-ethylhexyl) Phthalate (DEHP)	117-81-7	0.1	%	0.003	ND	0.009	ND

2. For any toy or childcare article intended for use by a child under three years of age if that product can be placed in the child's mouth

Diisononyl Phthalate (DINP)	28553-12-0 /68515-48-0	0.1	%	0.01	ND	ND	ND
Di-n-octyl Phthalate (DNOP)	117-84-0	0.1	%	0.01	ND	ND	ND

This document is issued by the Company subject to its General Conditions of Service printed overleaf, available on request or accessible at http://www.sgs.com/terms_and_conditions.htm and for electronic format documents, subject to Terms and Conditions for Electronic Documents at www.sgs.com/terms_e-document.htm. Attention is drawn to the limitation of liability, indemnification and jurisdiction issues defined therein. Any holder of this document is advised that information contained hereon reflects the Company's findings at the time of its intervention only and within the limits of Client's instructions, if any. The Company's sole responsibility is to its Client and this document does not exonerate parties to a transaction from exercising all their rights and obligations under the transaction documents. This document cannot be reproduced except in full, without prior written approval of the Company. Any unauthorized alteration, forgery or falsification of the content or appearance of this document is unlawful and offenders may be prosecuted to the fullest extent of the law. Unless otherwise stated the results shown in this test report refer only to the sample(s) tested and such sample(s) are retained for 30 days only.



SGS-CST Standards Technical Services Co., Ltd.
Shanghai Branch Laboratory

3rd Building, No. 889, Yishan Road, Xuhui District Shanghai, China 200233
中国·上海·徐汇区宜山路889号3号楼

t (86-21)61402666*2013
f (86-21)54500353

www.cn.sgs.com
e.sgs.china@sgs.com

Test Report

No.: SHHG1412047293FT-01

Date: JAN. 23, 2015

Page: 27 of 49

Test Item(s)	CAS NO.	Limit	Unit	MDL	004	005	006
Diisodecyl Phthalate (DIDP)	26761-40-0 /68515-49-1	0.1	%	0.01	ND	ND	ND

Conclusion **PASS** **PASS** **PASS**

Test Item(s)	CAS NO.	Limit	Unit	MDL	007	008	009
--------------	---------	-------	------	-----	-----	-----	-----

1. For all toys and childcare articles

Dibutyl Phthalate (DBP)	84-74-2	0.1	%	0.003	ND	ND	ND
Benzylbutyl Phthalate (BBP)	85-68-7	0.1	%	0.003	ND	ND	ND
Bis-(2-ethylhexyl) Phthalate (DEHP)	117-81-7	0.1	%	0.003	ND	ND	ND

2. For any toy or childcare article intended for use by a child under three years of age if can be placed in the child's that product mouth

Diisononyl Phthalate (DINP)	28553-12-0 /68515-48-0	0.1	%	0.01	ND	ND	ND
Di-n-octyl Phthalate (DNOP)	117-84-0	0.1	%	0.003	ND	ND	ND
Diisodecyl Phthalate (DIDP)	26761-40-0 /68515-49-1	0.1	%	0.01	ND	ND	ND

Conclusion **PASS** **PASS** **PASS**

CPSIA section 101(f) - Lead in paint/similar surface coating material

Test Method : CPSC Test Method: CPSC-CH-E1003-09.1 'Standard Operation Procedure for Determining Lead (Pb) in Paint and Other Similar Surface Coatings'.

Test Item(s)	Limit	Unit	MDL	001	002	003
Lead (Pb)	0.009	%	0.002	ND	ND	ND

Conclusion **PASS** **PASS** **PASS**

Test Item(s)	Limit	Unit	MDL	004
Lead (Pb)	0.009	%	0.002	ND

Conclusion **PASS**

This document is issued by the Company subject to its General Conditions of Service printed overleaf, available on request or accessible at http://www.sgs.com/terms_and_conditions.htm and for electronic format documents, subject to Terms and Conditions for Electronic Documents at www.sgs.com/terms_e-document.htm. Attention is drawn to the limitation of liability, indemnification and jurisdiction issues defined therein. Any holder of this document is advised that information contained hereon reflects the Company's findings at the time of its intervention only and within the limits of Client's instructions, if any. The Company's sole responsibility is to its Client and this document does not exonerate parties to a transaction from exercising all their rights and obligations under the transaction documents. This document cannot be reproduced except in full, without prior written approval of the Company. Any unauthorized alteration, forgery or falsification of the content or appearance of this document is unlawful and offenders may be prosecuted to the fullest extent of the law. Unless otherwise stated the results shown in this test report refer only to the sample(s) tested and such sample(s) are retained for 30 days only.





Test Report

No.: SHHG1412047293FT-01

Date: JAN. 23, 2015 Page: 28 of 49

CPSIA section 101(a)(2) - Lead in accessible substrate materials (including Children's Metal Jewelry)(Metal)

Test Method : CPSC Test Method: CPSC-CH-E1001-08.1 'Standard Operating Procedure for Determining Total Lead (Pb) in Children's Metal Products (Including Children's Metal Jewelry)'

<u>Test Item(s)</u>	<u>Limit</u>	<u>Unit</u>	<u>MDL</u>	<u>017</u>	<u>018</u>	<u>019</u>
Lead (Pb)	0.01	%	0.002	ND	ND	ND
Conclusion				PASS	PASS	PASS
<u>Test Item(s)</u>	<u>Limit</u>	<u>Unit</u>	<u>MDL</u>	<u>020</u>	<u>021</u>	<u>022</u>
Lead (Pb)	0.01	%	0.002	0.0037	ND	ND
Conclusion				PASS	PASS	PASS
<u>Test Item(s)</u>	<u>Limit</u>	<u>Unit</u>	<u>MDL</u>	<u>023</u>	<u>024</u>	<u>025</u>
Lead (Pb)	0.01	%	0.002	ND	0.0034	ND
Conclusion				PASS	PASS	PASS
<u>Test Item(s)</u>	<u>Limit</u>	<u>Unit</u>	<u>MDL</u>	<u>026</u>	<u>027</u>	<u>028</u>
Lead (Pb)	0.01	%	0.002	ND	ND	ND
Conclusion				PASS	PASS	PASS

Notes :

(1) Limit applies to a children's product manufactured after 14 August 2011 (Public Law 112-28 (HR2715, 112th Congress) amending CPSIA)

CPSIA section 101(a)(2) - Lead in accessible substrate materials (including Children's Metal Jewelry)

(Non Metal)

Test Method : CPSC Test Method: CPSC-CH-E1002-08.1 'Standard Operation Procedure for Determining Total Lead (Pb) in Non-Metal Children Product'

<u>Test Item(s)</u>	<u>Limit</u>	<u>Unit</u>	<u>MDL</u>	<u>005</u>	<u>006</u>	<u>007</u>
Lead (Pb)	0.01	%	0.002	ND	ND	ND
Conclusion				PASS	PASS	PASS
<u>Test Item(s)</u>	<u>Limit</u>	<u>Unit</u>	<u>MDL</u>	<u>008</u>	<u>009</u>	<u>010</u>
Lead (Pb)	0.01	%	0.002	ND	ND	ND
Conclusion				PASS	PASS	PASS

This document is issued by the Company subject to its General Conditions of Service printed overleaf, available on request or accessible at http://www.sgs.com/terms_and_conditions.htm and for electronic format documents, subject to Terms and Conditions for Electronic Documents at www.sgs.com/terms_e-document.htm. Attention is drawn to the limitation of liability, indemnification and jurisdiction issues defined therein. Any holder of this document is advised that information contained hereon reflects the Company's findings at the time of its intervention only and within the limits of Client's instructions, if any. The Company's sole responsibility is to its Client and this document does not exonerate parties to a transaction from exercising all their rights and obligations under the transaction documents. This document cannot be reproduced except in full, without prior written approval of the Company. Any unauthorized alteration, forgery or falsification of the content or appearance of this document is unlawful and offenders may be prosecuted to the fullest extent of the law. Unless otherwise stated the results shown in this test report refer only to the sample(s) tested and such sample(s) are retained for 30 days only.

Test Report

No.: SHHG1412047293FT-01

Date: JAN. 23, 2015

Page: 29 of 49

Test Item(s)	Limit	Unit	MDL	011	012	013
Lead (Pb)	0.01	%	0.002	ND	ND	ND
Conclusion				PASS	PASS	PASS

Test Item(s)	Limit	Unit	MDL	014	015	016
Lead (Pb)	0.01	%	0.002	ND	ND	ND
Conclusion				PASS	PASS	PASS

Notes :

(1) Limit applies to a children's product manufactured after 14 August 2011 (Public Law 112-28 (HR 2715, 112th Congress) amending CPSIA)



SHA14-249148.001



SHA14-249148.002

This document is issued by the Company subject to its General Conditions of Service printed overleaf, available on request or accessible at http://www.sgs.com/terms_and_conditions.htm and for electronic format documents, subject to Terms and Conditions for Electronic Documents at www.sgs.com/terms_e-document.htm. Attention is drawn to the limitation of liability, indemnification and jurisdiction issues defined therein. Any holder of this document is advised that information contained hereon reflects the Company's findings at the time of its intervention only and within the limits of Client's instructions, if any. The Company's sole responsibility is to its Client and this document does not exonerate parties to a transaction from exercising all their rights and obligations under the transaction documents. This document cannot be reproduced except in full, without prior written approval of the Company. Any unauthorized alteration, forgery or falsification of the content or appearance of this document is unlawful and offenders may be prosecuted to the fullest extent of the law. Unless otherwise stated the results shown in this test report refer only to the sample(s) tested and such sample(s) are retained for 30 days only.



SHA14-249148.003



SHA14-249148.004



SHA14-249148.005

This document is issued by the Company subject to its General Conditions of Service printed overleaf, available on request or accessible at http://www.sgs.com/terms_and_conditions.htm and for electronic format documents, subject to Terms and Conditions for Electronic Documents at www.sgs.com/terms_e-document.htm. Attention is drawn to the limitation of liability, indemnification and jurisdiction issues defined therein. Any holder of this document is advised that information contained hereon reflects the Company's findings at the time of its intervention only and within the limits of Client's instructions, if any. The Company's sole responsibility is to its Client and this document does not exonerate parties to a transaction from exercising all their rights and obligations under the transaction documents. This document cannot be reproduced except in full, without prior written approval of the Company. Any unauthorized alteration, forgery or falsification of the content or appearance of this document is unlawful and offenders may be prosecuted to the fullest extent of the law. Unless otherwise stated the results shown in this test report refer only to the sample(s) tested and such sample(s) are retained for 30 days only.



SHA14-249148.006

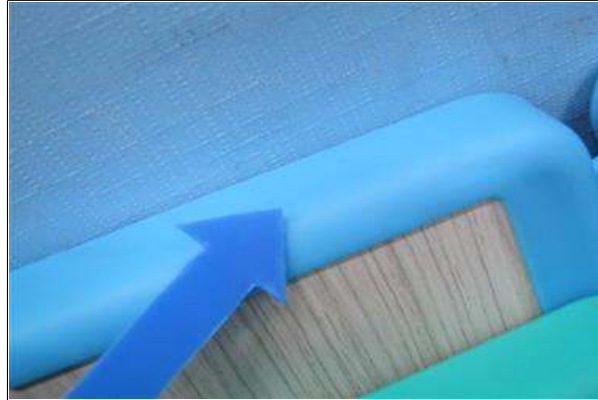


SHA14-249148.007



SHA14-249148.008

This document is issued by the Company subject to its General Conditions of Service printed overleaf, available on request or accessible at http://www.sgs.com/terms_and_conditions.htm and, for electronic format documents, subject to Terms and Conditions for Electronic Documents at www.sgs.com/terms_e-document.htm. Attention is drawn to the limitation of liability, indemnification and jurisdiction issues defined therein. Any holder of this document is advised that information contained hereon reflects the Company's findings at the time of its intervention only and within the limits of Client's instructions, if any. The Company's sole responsibility is to its Client and this document does not exonerate parties to a transaction from exercising all their rights and obligations under the transaction documents. This document cannot be reproduced except in full, without prior written approval of the Company. Any unauthorized alteration, forgery or falsification of the content or appearance of this document is unlawful and offenders may be prosecuted to the fullest extent of the law. Unless otherwise stated the results shown in this test report refer only to the sample(s) tested and such sample(s) are retained for 30 days only.



SHA14-249148.009



SHA14-249148.010



SHA14-249148.011

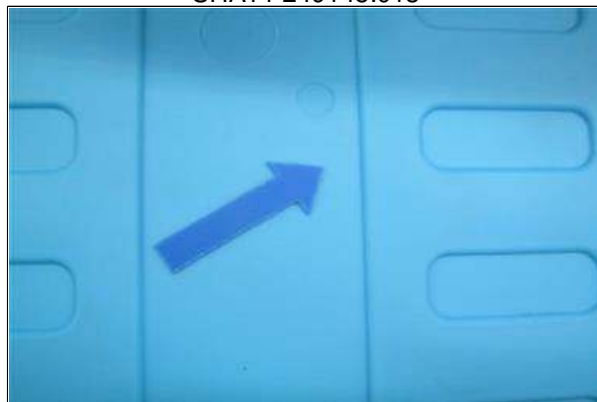
This document is issued by the Company subject to its General Conditions of Service printed overleaf, available on request or accessible at http://www.sgs.com/terms_and_conditions.htm and for electronic format documents, subject to Terms and Conditions for Electronic Documents at www.sgs.com/terms_e-document.htm. Attention is drawn to the limitation of liability, indemnification and jurisdiction issues defined therein. Any holder of this document is advised that information contained hereon reflects the Company's findings at the time of its intervention only and within the limits of Client's instructions, if any. The Company's sole responsibility is to its Client and this document does not exonerate parties to a transaction from exercising all their rights and obligations under the transaction documents. This document cannot be reproduced except in full, without prior written approval of the Company. Any unauthorized alteration, forgery or falsification of the content or appearance of this document is unlawful and offenders may be prosecuted to the fullest extent of the law. Unless otherwise stated the results shown in this test report refer only to the sample(s) tested and such sample(s) are retained for 30 days only.



SHA14-249148.012



SHA14-249148.013



SHA14-249148.014

This document is issued by the Company subject to its General Conditions of Service printed overleaf, available on request or accessible at http://www.sgs.com/terms_and_conditions.htm and for electronic format documents, subject to Terms and Conditions for Electronic Documents at www.sgs.com/terms_e-document.htm. Attention is drawn to the limitation of liability, indemnification and jurisdiction issues defined therein. Any holder of this document is advised that information contained hereon reflects the Company's findings at the time of its intervention only and within the limits of Client's instructions, if any. The Company's sole responsibility is to its Client and this document does not exonerate parties to a transaction from exercising all their rights and obligations under the transaction documents. This document cannot be reproduced except in full, without prior written approval of the Company. Any unauthorized alteration, forgery or falsification of the content or appearance of this document is unlawful and offenders may be prosecuted to the fullest extent of the law. Unless otherwise stated the results shown in this test report refer only to the sample(s) tested and such sample(s) are retained for 30 days only.



SHA14-249148.015



SHA14-249148.016



SHA14-249148.017

This document is issued by the Company subject to its General Conditions of Service printed overleaf, available on request or accessible at http://www.sgs.com/terms_and_conditions.htm and for electronic format documents, subject to Terms and Conditions for Electronic Documents at www.sgs.com/terms_e-document.htm. Attention is drawn to the limitation of liability, indemnification and jurisdiction issues defined therein. Any holder of this document is advised that information contained hereon reflects the Company's findings at the time of its intervention only and within the limits of Client's instructions, if any. The Company's sole responsibility is to its Client and this document does not exonerate parties to a transaction from exercising all their rights and obligations under the transaction documents. This document cannot be reproduced except in full, without prior written approval of the Company. Any unauthorized alteration, forgery or falsification of the content or appearance of this document is unlawful and offenders may be prosecuted to the fullest extent of the law. Unless otherwise stated the results shown in this test report refer only to the sample(s) tested and such sample(s) are retained for 30 days only.



SHA14-249148.018



SHA14-249148.019



SHA14-249148.020

This document is issued by the Company subject to its General Conditions of Service printed overleaf, available on request or accessible at http://www.sgs.com/terms_and_conditions.htm and for electronic format documents, subject to Terms and Conditions for Electronic Documents at www.sgs.com/terms_e-document.htm. Attention is drawn to the limitation of liability, indemnification and jurisdiction issues defined therein. Any holder of this document is advised that information contained hereon reflects the Company's findings at the time of its intervention only and within the limits of Client's instructions, if any. The Company's sole responsibility is to its Client and this document does not exonerate parties to a transaction from exercising all their rights and obligations under the transaction documents. This document cannot be reproduced except in full, without prior written approval of the Company. Any unauthorized alteration, forgery or falsification of the content or appearance of this document is unlawful and offenders may be prosecuted to the fullest extent of the law. Unless otherwise stated the results shown in this test report refer only to the sample(s) tested and such sample(s) are retained for 30 days only.

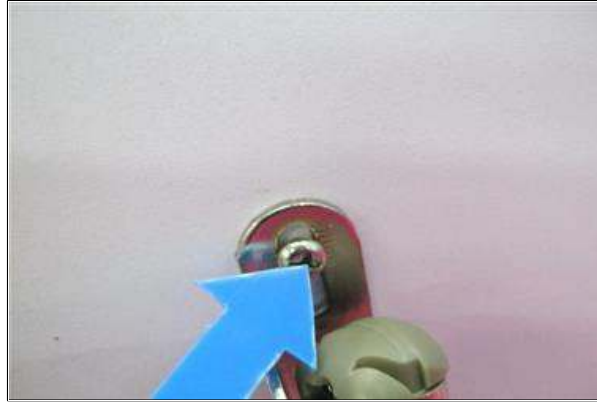


SHA14-249148.021



SHA14-249148.022

This document is issued by the Company subject to its General Conditions of Service printed overleaf, available on request or accessible at http://www.sgs.com/terms_and_conditions.htm and for electronic format documents, subject to Terms and Conditions for Electronic Documents at www.sgs.com/terms_e-document.htm. Attention is drawn to the limitation of liability, indemnification and jurisdiction issues defined therein. Any holder of this document is advised that information contained hereon reflects the Company's findings at the time of its intervention only and within the limits of Client's instructions, if any. The Company's sole responsibility is to its Client and this document does not exonerate parties to a transaction from exercising all their rights and obligations under the transaction documents. This document cannot be reproduced except in full, without prior written approval of the Company. Any unauthorized alteration, forgery or falsification of the content or appearance of this document is unlawful and offenders may be prosecuted to the fullest extent of the law. Unless otherwise stated the results shown in this test report refer only to the sample(s) tested and such sample(s) are retained for 30 days only.



SHA14-249148.023

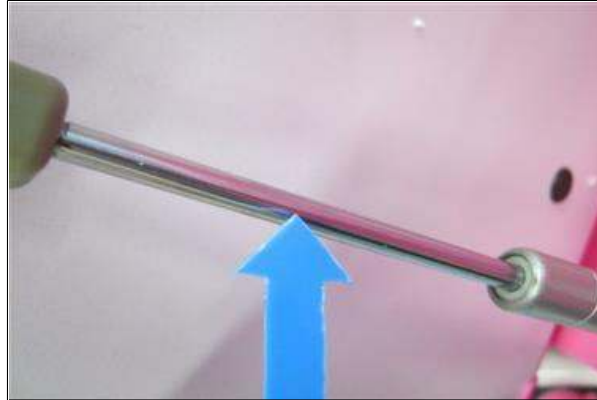


SHA14-249148.024



SHA14-249148.025

This document is issued by the Company subject to its General Conditions of Service printed overleaf, available on request or accessible at http://www.sgs.com/terms_and_conditions.htm and for electronic format documents, subject to Terms and Conditions for Electronic Documents at www.sgs.com/terms_e-document.htm. Attention is drawn to the limitation of liability, indemnification and jurisdiction issues defined therein. Any holder of this document is advised that information contained hereon reflects the Company's findings at the time of its intervention only and within the limits of Client's instructions, if any. The Company's sole responsibility is to its Client and this document does not exonerate parties to a transaction from exercising all their rights and obligations under the transaction documents. This document cannot be reproduced except in full, without prior written approval of the Company. Any unauthorized alteration, forgery or falsification of the content or appearance of this document is unlawful and offenders may be prosecuted to the fullest extent of the law. Unless otherwise stated the results shown in this test report refer only to the sample(s) tested and such sample(s) are retained for 30 days only.



SHA14-249148.026



SHA14-249148.027



SHA14-249148.028

This document is issued by the Company subject to its General Conditions of Service printed overleaf, available on request or accessible at http://www.sgs.com/terms_and_conditions.htm and for electronic format documents, subject to Terms and Conditions for Electronic Documents at www.sgs.com/terms_e-document.htm. Attention is drawn to the limitation of liability, indemnification and jurisdiction issues defined therein. Any holder of this document is advised that information contained hereon reflects the Company's findings at the time of its intervention only and within the limits of Client's instructions, if any. The Company's sole responsibility is to its Client and this document does not exonerate parties to a transaction from exercising all their rights and obligations under the transaction documents. This document cannot be reproduced except in full, without prior written approval of the Company. Any unauthorized alteration, forgery or falsification of the content or appearance of this document is unlawful and offenders may be prosecuted to the fullest extent of the law. Unless otherwise stated the results shown in this test report refer only to the sample(s) tested and such sample(s) are retained for 30 days only.

Test Report

No.: SHHG1412047293FT-01

Date: JAN. 23, 2015

Page: 39 of 49

Test Part Description :

Specimen No.	SGS Sample ID	Description
SN1	SHA15-000586.001	Colorful paper sticker
SN2	SHA15-000586.002	Black soft plastic foot pad(round)
SN3	SHA15-000586.003	Pink soft plastic(desk)
SN4	SHA15-000586.004	Green soft plastic(desk)
SN5	SHA15-000586.005	Blue soft plastic(desk)
SN6	SHA15-000586.006	Black plastic end cap
SN7	SHA15-000586.007	Pink plastic end cap
SN8	SHA15-000586.008	Pink plastic pad(chair)
SN9	SHA15-000586.009	Green plastic pad(chair)
SN10	SHA15-000586.010	Blue plastic pad(chair)
SN11	SHA15-000586.011	Brown plastic(desk)
SN12	SHA15-000586.012	Transparent plastic washer

Remarks :

- (1) 1 mg/kg = 0.0001%
- (2) MDL = Method Detection Limit
- (3) ND = Not Detected (< MDL)
- (4) "-" = Not Regulated

California Bill AB 1108 : 2007 - Phthalates

Test Method : With reference to CPSC-CH-C1001-09.3, analysis was performed by GC-MS

Test Item(s)	CAS NO.	Limit	Unit	MDL	<u>001</u>	<u>002</u>	<u>003</u>
1. For all toys and childcare articles							
Dibutyl Phthalate (DBP)	84-74-2	0.1	%	0.003	ND	ND	ND
Benzylbutyl Phthalate (BBP)	85-68-7	0.1	%	0.003	ND	ND	ND
Bis-(2-ethylhexyl) Phthalate (DEHP)	117-81-7	0.1	%	0.003	0.010	ND	ND

This document is issued by the Company subject to its General Conditions of Service printed overleaf, available on request or accessible at http://www.sgs.com/terms_and_conditions.htm and for electronic format documents, subject to Terms and Conditions for Electronic Documents at www.sgs.com/terms_e-document.htm. Attention is drawn to the limitation of liability, indemnification and jurisdiction issues defined therein. Any holder of this document is advised that information contained hereon reflects the Company's findings at the time of its intervention only and within the limits of Client's instructions, if any. The Company's sole responsibility is to its Client and this document does not exonerate parties to a transaction from exercising all their rights and obligations under the transaction documents. This document cannot be reproduced except in full, without prior written approval of the Company. Any unauthorized alteration, forgery or falsification of the content or appearance of this document is unlawful and offenders may be prosecuted to the fullest extent of the law. Unless otherwise stated the results shown in this test report refer only to the sample(s) tested and such sample(s) are retained for 30 days only.



3rd Building, No. 889, Yishan Road, Xuhui District Shanghai, China 200233 t (86-21)61402666*2013 f (86-21)54500353 www.cn.sgs.com
 中国·上海·徐汇区宜山路889号3号楼 邮编:200233 t (86-21)61402666*2013 f (86-21)54500353 e sgs.china@sgs.com



Test Report

No.: SHHG1412047293FT-01

Date: JAN. 23, 2015

Page: 40 of 49

<u>Test Item(s)</u>	<u>CAS NO.</u>	<u>Limit</u>	<u>Unit</u>	<u>MDL</u>	<u>001</u>	<u>002</u>	<u>003</u>
2. For any toy or childcare article intended for use by a child under three years of age if can be placed in the child's that product mouth							
Diisononyl Phthalate (DINP)	28553-12-0 /68515-48-0	0.1	%	0.01	ND	ND	ND
Di-n-octyl Phthalate (DNOP)	117-84-0	0.1	%	0.003	ND	ND	ND
Diisodecyl Phthalate (DIDP)	26761-40-0 /68515-49-1	0.1	%	0.01	ND	ND	ND
Conclusion					PASS	PASS	PASS

<u>Test Item(s)</u>	<u>CAS NO.</u>	<u>Limit</u>	<u>Unit</u>	<u>MDL</u>	<u>004</u>	<u>005</u>
1. For all toys and childcare articles						
Dibutyl Phthalate (DBP)	84-74-2	0.1	%	0.003	ND	ND
Benzylbutyl Phthalate (BBP)	85-68-7	0.1	%	0.003	ND	ND
Bis-(2-ethylhexyl) Phthalate (DEHP)	117-81-7	0.1	%	0.003	ND	ND
2. For any toy or childcare article intended for use by a child under three years of age if can be placed in the child's that product mouth						
Diisononyl Phthalate (DINP)	28553-12-0 /68515-48-0	0.1	%	0.01	ND	ND
Di-n-octyl Phthalate (DNOP)	117-84-0	0.1	%	0.003	ND	ND
Diisodecyl Phthalate (DIDP)	26761-40-0 /68515-49-1	0.1	%	0.01	ND	ND
Conclusion					PASS	PASS

This document is issued by the Company subject to its General Conditions of Service printed overleaf, available on request or accessible at http://www.sgs.com/terms_and_conditions.htm and for electronic format documents, subject to Terms and Conditions for Electronic Documents at www.sgs.com/terms_e-document.htm. Attention is drawn to the limitation of liability, indemnification and jurisdiction issues defined therein. Any holder of this document is advised that information contained hereon reflects the Company's findings at the time of its intervention only and within the limits of Client's instructions, if any. The Company's sole responsibility is to its Client and this document does not exonerate parties to a transaction from exercising all their rights and obligations under the transaction documents. This document cannot be reproduced except in full, without prior written approval of the Company. Any unauthorized alteration, forgery or falsification of the content or appearance of this document is unlawful and offenders may be prosecuted to the fullest extent of the law. Unless otherwise stated the results shown in this test report refer only to the sample(s) tested and such sample(s) are retained for 30 days only.



SGS-CST Standards Technical Services Co., Ltd.
Shanghai Branch Laboratory

3rd Building, No. 889, Yishan Road, Xuhui District Shanghai, China 200233
中国·上海·徐汇区宜山路889号3号楼 邮编: 200233

t (86-21)61402666*2013 f (86-21)54500353
t (86-21)61402666*2013 f (86-21)54500353

www.cn.sgs.com
e sgs.china@sgs.com



Test Report

No.: SHHG1412047293FT-01

Date: JAN. 23, 2015 Page: 41 of 49

Phthalate content

Test Method : With reference to CPSC-CH-C1001-09.3, analysis was performed by GC-MS

<u>Test Item(s)</u>	<u>CAS NO.</u>	<u>Limit</u>	<u>Unit</u>	<u>MDL</u>	<u>001</u>	<u>002</u>	<u>003</u>
Dibutyl Phthalate (DBP)	84-74-2	0.1	%	0.003	ND	ND	ND
Benzylbutyl Phthalate (BBP)	85-68-7	0.1	%	0.003	ND	ND	ND
Bis-(2-ethylhexyl) Phthalate (DEHP)	117-81-7	0.1	%	0.003	0.010	ND	ND
Diisononyl Phthalate (DINP)	28553-12-0 /68515-48-0	0.1	%	0.01	ND	ND	ND
Di-n-octyl Phthalate (DNOP)	117-84-0	0.1	%	0.003	ND	ND	ND
Diisodecyl Phthalate (DIDP)	26761-40-0 /68515-49-1	0.1	%	0.01	ND	ND	ND
Di-n-hexyl Phthalate (DnHP)	84-75-3	0.1	%	0.003	ND	ND	ND
Conclusion					PASS	PASS	PASS

<u>Test Item(s)</u>	<u>CAS NO.</u>	<u>Limit</u>	<u>Unit</u>	<u>MDL</u>	<u>004</u>	<u>005</u>
Dibutyl Phthalate (DBP)	84-74-2	0.1	%	0.003	ND	ND
Benzylbutyl Phthalate (BBP)	85-68-7	0.1	%	0.003	ND	ND
Bis-(2-ethylhexyl) Phthalate (DEHP)	117-81-7	0.1	%	0.003	ND	ND
Diisononyl Phthalate (DINP)	28553-12-0 /68515-48-0	0.1	%	0.01	ND	ND
Di-n-octyl Phthalate (DNOP)	117-84-0	0.1	%	0.003	ND	ND
Diisodecyl Phthalate (DIDP)	26761-40-0 /68515-49-1	0.1	%	0.01	ND	ND
Di-n-hexyl Phthalate (DnHP)	84-75-3	0.1	%	0.003	ND	ND
Conclusion					PASS	PASS

Notes :

(1) The maximum permissible limit is quoted from the client requirement

This document is issued by the Company subject to its General Conditions of Service printed overleaf, available on request or accessible at http://www.sgs.com/terms_and_conditions.htm and for electronic format documents, subject to Terms and Conditions for Electronic Documents at www.sgs.com/terms_e-document.htm. Attention is drawn to the limitation of liability, indemnification and jurisdiction issues defined therein. Any holder of this document is advised that information contained hereon reflects the Company's findings at the time of its intervention only and within the limits of Client's instructions, if any. The Company's sole responsibility is to its Client and this document does not exonerate parties to a transaction from exercising all their rights and obligations under the transaction documents. This document cannot be reproduced except in full, without prior written approval of the Company. Any unauthorized alteration, forgery or falsification of the content or appearance of this document is unlawful and offenders may be prosecuted to the fullest extent of the law. Unless otherwise stated the results shown in this test report refer only to the sample(s) tested and such sample(s) are retained for 30 days only.

American Society for Testing and Materials –ASTM F 963-11 – soluble heavy metal in Substrate Materials/paint and similar surface-coating materials

Test Method : Soluble Heavy Metal contents (Clause 4.3.5) - Sample was extracted by dilute hydrochloric acid in accordance with ASTM F 963-11(Clause 8.3), analysis was performed by ICP-OES.

<u>Test Item(s)</u>	<u>Limit</u>	<u>Unit</u>	<u>MDL</u>	<u>006</u>	<u>007</u>	<u>008</u>
Soluble Lead (Pb)	90	mg/kg	5	ND	ND	ND
Soluble Antimony (Sb)	60	mg/kg	5	ND	ND	ND
Soluble Arsenic (As)	25	mg/kg	2.5	ND	ND	ND
Soluble Barium (Ba)	1000	mg/kg	10	ND	ND	ND
Soluble Cadmium (Cd)	75	mg/kg	5	ND	ND	ND
Soluble Chromium (Cr)	60	mg/kg	5	ND	ND	ND

<u>Test Item(s)</u>	<u>Limit</u>	<u>Unit</u>	<u>MDL</u>	<u>006</u>	<u>007</u>	<u>008</u>
Soluble Mercury (Hg)	60	mg/kg	5	ND	ND	ND
Soluble Selenium (Se)	500	mg/kg	10	ND	ND	ND

<u>Test Item(s)</u>	<u>Limit</u>	<u>Unit</u>	<u>MDL</u>	<u>009</u>	<u>010</u>	<u>011</u>
Soluble Lead (Pb)	90	mg/kg	5	ND	ND	ND
Soluble Antimony (Sb)	60	mg/kg	5	ND	ND	ND
Soluble Arsenic (As)	25	mg/kg	2.5	ND	ND	ND
Soluble Barium (Ba)	1000	mg/kg	10	ND	ND	ND
Soluble Cadmium (Cd)	75	mg/kg	5	ND	ND	ND
Soluble Chromium (Cr)	60	mg/kg	5	ND	ND	ND
Soluble Mercury (Hg)	60	mg/kg	5	ND	ND	ND
Soluble Selenium (Se)	500	mg/kg	10	ND	ND	ND

<u>Test Item(s)</u>	<u>Limit</u>	<u>Unit</u>	<u>MDL</u>	<u>012</u>
Soluble Lead (Pb)	90	mg/kg	5	ND
Soluble Antimony (Sb)	60	mg/kg	5	ND
Soluble Arsenic (As)	25	mg/kg	2.5	ND
Soluble Barium (Ba)	1000	mg/kg	10	ND
Soluble Cadmium (Cd)	75	mg/kg	5	ND
Soluble Chromium (Cr)	60	mg/kg	5	ND
Soluble Mercury (Hg)	60	mg/kg	5	ND
Soluble Selenium (Se)	500	mg/kg	10	ND

Notes :

(1) Results shown are of the adjusted analytical results

This document is issued by the Company subject to its General Conditions of Service printed overleaf, available on request or accessible at http://www.sgs.com/terms_and_conditions.htm and for electronic format documents, subject to Terms and Conditions for Electronic Documents at www.sgs.com/terms_e-document.htm. Attention is drawn to the limitation of liability, indemnification and jurisdiction issues defined therein. Any holder of this document is advised that information contained hereon reflects the Company's findings at the time of its intervention only and within the limits of Client's instructions, if any. The Company's sole responsibility is to its Client and this document does not exonerate parties to a transaction from exercising all their rights and obligations under the transaction documents. This document cannot be reproduced except in full, without prior written approval of the Company. Any unauthorized alteration, forgery or falsification of the content or appearance of this document is unlawful and offenders may be prosecuted to the fullest extent of the law. Unless otherwise stated the results shown in this test report refer only to the sample(s) tested and such sample(s) are retained for 30 days only.





SHA15-000586.001



SHA15-000586.002



SHA15-000586.003

This document is issued by the Company subject to its General Conditions of Service printed overleaf, available on request or accessible at http://www.sgs.com/terms_and_conditions.htm and for electronic format documents, subject to Terms and Conditions for Electronic Documents at www.sgs.com/terms_e-document.htm. Attention is drawn to the limitation of liability, indemnification and jurisdiction issues defined therein. Any holder of this document is advised that information contained hereon reflects the Company's findings at the time of its intervention only and within the limits of Client's instructions, if any. The Company's sole responsibility is to its Client and this document does not exonerate parties to a transaction from exercising all their rights and obligations under the transaction documents. This document cannot be reproduced except in full, without prior written approval of the Company. Any unauthorized alteration, forgery or falsification of the content or appearance of this document is unlawful and offenders may be prosecuted to the fullest extent of the law. Unless otherwise stated the results shown in this test report refer only to the sample(s) tested and such sample(s) are retained for 30 days only.



SHA15-000586.004



SHA15-000586.005



SHA15-000586.006

This document is issued by the Company subject to its General Conditions of Service printed overleaf, available on request or accessible at http://www.sgs.com/terms_and_conditions.htm and for electronic format documents, subject to Terms and Conditions for Electronic Documents at www.sgs.com/terms_e-document.htm. Attention is drawn to the limitation of liability, indemnification and jurisdiction issues defined therein. Any holder of this document is advised that information contained hereon reflects the Company's findings at the time of its intervention only and within the limits of Client's instructions, if any. The Company's sole responsibility is to its Client and this document does not exonerate parties to a transaction from exercising all their rights and obligations under the transaction documents. This document cannot be reproduced except in full, without prior written approval of the Company. Any unauthorized alteration, forgery or falsification of the content or appearance of this document is unlawful and offenders may be prosecuted to the fullest extent of the law. Unless otherwise stated the results shown in this test report refer only to the sample(s) tested and such sample(s) are retained for 30 days only.



SHA15-000586.007

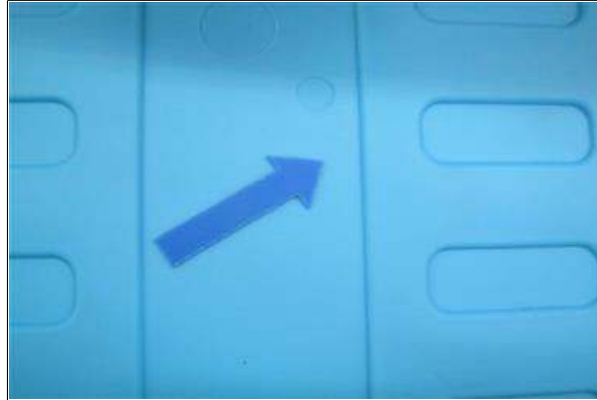


SHA15-000586.008



SHA15-000586.009

This document is issued by the Company subject to its General Conditions of Service printed overleaf, available on request or accessible at http://www.sgs.com/terms_and_conditions.htm and for electronic format documents, subject to Terms and Conditions for Electronic Documents at www.sgs.com/terms_e-document.htm. Attention is drawn to the limitation of liability, indemnification and jurisdiction issues defined therein. Any holder of this document is advised that information contained hereon reflects the Company's findings at the time of its intervention only and within the limits of Client's instructions, if any. The Company's sole responsibility is to its Client and this document does not exonerate parties to a transaction from exercising all their rights and obligations under the transaction documents. This document cannot be reproduced except in full, without prior written approval of the Company. Any unauthorized alteration, forgery or falsification of the content or appearance of this document is unlawful and offenders may be prosecuted to the fullest extent of the law. Unless otherwise stated the results shown in this test report refer only to the sample(s) tested and such sample(s) are retained for 30 days only.



SHA15-000586.010



SHA15-000586.011



SHA15-000586.012

This document is issued by the Company subject to its General Conditions of Service printed overleaf, available on request or accessible at http://www.sgs.com/terms_and_conditions.htm and for electronic format documents, subject to Terms and Conditions for Electronic Documents at www.sgs.com/terms_e-document.htm. Attention is drawn to the limitation of liability, indemnification and jurisdiction issues defined therein. Any holder of this document is advised that information contained hereon reflects the Company's findings at the time of its intervention only and within the limits of Client's instructions, if any. The Company's sole responsibility is to its Client and this document does not exonerate parties to a transaction from exercising all their rights and obligations under the transaction documents. This document cannot be reproduced except in full, without prior written approval of the Company. Any unauthorized alteration, forgery or falsification of the content or appearance of this document is unlawful and offenders may be prosecuted to the fullest extent of the law. Unless otherwise stated the results shown in this test report refer only to the sample(s) tested and such sample(s) are retained for 30 days only.

Sample Photo:

Received sample (Aqua table)



Received sample (Aqua chair front view)



Received sample (Aqua chair side view)



Received sample (Pink table)



This document is issued by the Company subject to its General Conditions of Service printed overleaf, available on request or accessible at http://www.sgs.com/terms_and_conditions.htm and for electronic format documents, subject to Terms and Conditions for Electronic Documents at www.sgs.com/terms_e-document.htm. Attention is drawn to the limitation of liability, indemnification and jurisdiction issues defined therein. Any holder of this document is advised that information contained hereon reflects the Company's findings at the time of its intervention only and within the limits of Client's instructions, if any. The Company's sole responsibility is to its Client and this document does not exonerate parties to a transaction from exercising all their rights and obligations under the transaction documents. This document cannot be reproduced except in full, without prior written approval of the Company. Any unauthorized alteration, forgery or falsification of the content or appearance of this document is unlawful and offenders may be prosecuted to the fullest extent of the law. Unless otherwise stated the results shown in this test report refer only to the sample(s) tested and such sample(s) are retained for 30 days only.

Received sample (Pink chair front view)



Received sample (Pink chair side view)



Received sample (Green table)



Received sample (Green chair front view)



This document is issued by the Company subject to its General Conditions of Service printed overleaf, available on request or accessible at http://www.sgs.com/terms_and_conditions.htm and for electronic format documents, subject to Terms and Conditions for Electronic Documents at www.sgs.com/terms_e-document.htm. Attention is drawn to the limitation of liability, indemnification and jurisdiction issues defined therein. Any holder of this document is advised that information contained hereon reflects the Company's findings at the time of its intervention only and within the limits of Client's instructions, if any. The Company's sole responsibility is to its Client and this document does not exonerate parties to a transaction from exercising all their rights and obligations under the transaction documents. This document cannot be reproduced except in full, without prior written approval of the Company. Any unauthorized alteration, forgery or falsification of the content or appearance of this document is unlawful and offenders may be prosecuted to the fullest extent of the law. Unless otherwise stated the results shown in this test report refer only to the sample(s) tested and such sample(s) are retained for 30 days only.

Received sample (Green chair side view)



SGS authenticate the photo on original report only

End of Report

This document is issued by the Company subject to its General Conditions of Service printed overleaf, available on request or accessible at http://www.sgs.com/terms_and_conditions.htm and for electronic format documents, subject to Terms and Conditions for Electronic Documents at www.sgs.com/terms_e-document.htm. Attention is drawn to the limitation of liability, indemnification and jurisdiction issues defined therein. Any holder of this document is advised that information contained hereon reflects the Company's findings at the time of its intervention only and within the limits of Client's instructions, if any. The Company's sole responsibility is to its Client and this document does not exonerate parties to a transaction from exercising all their rights and obligations under the transaction documents. This document cannot be reproduced except in full, without prior written approval of the Company. Any unauthorized alteration, forgery or falsification of the content or appearance of this document is unlawful and offenders may be prosecuted to the fullest extent of the law. Unless otherwise stated the results shown in this test report refer only to the sample(s) tested and such sample(s) are retained for 30 days only.